

CONTENTS

A. Installation of the cutting

ELECTRIC CORNER ROUNDING EQUIPMENT

B. Operation and precautions

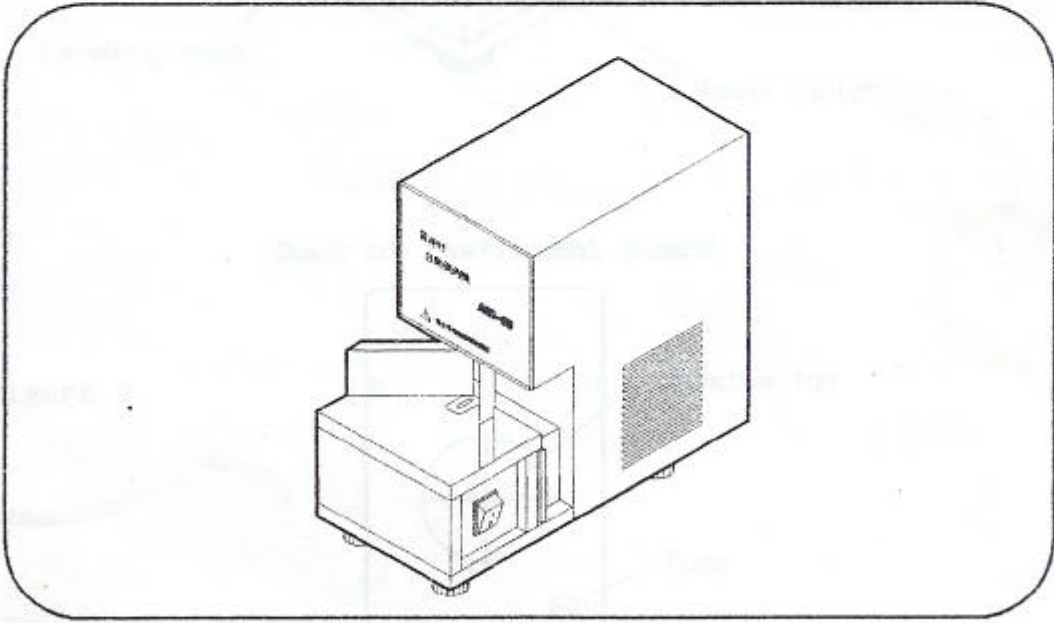
C. Checking and care of the unit

D. Constituent diagram

E. Parts List

ACR-50

User Manual and Parts List



Power 110VAC (50/60Hz)
220VAC (50/60Hz)

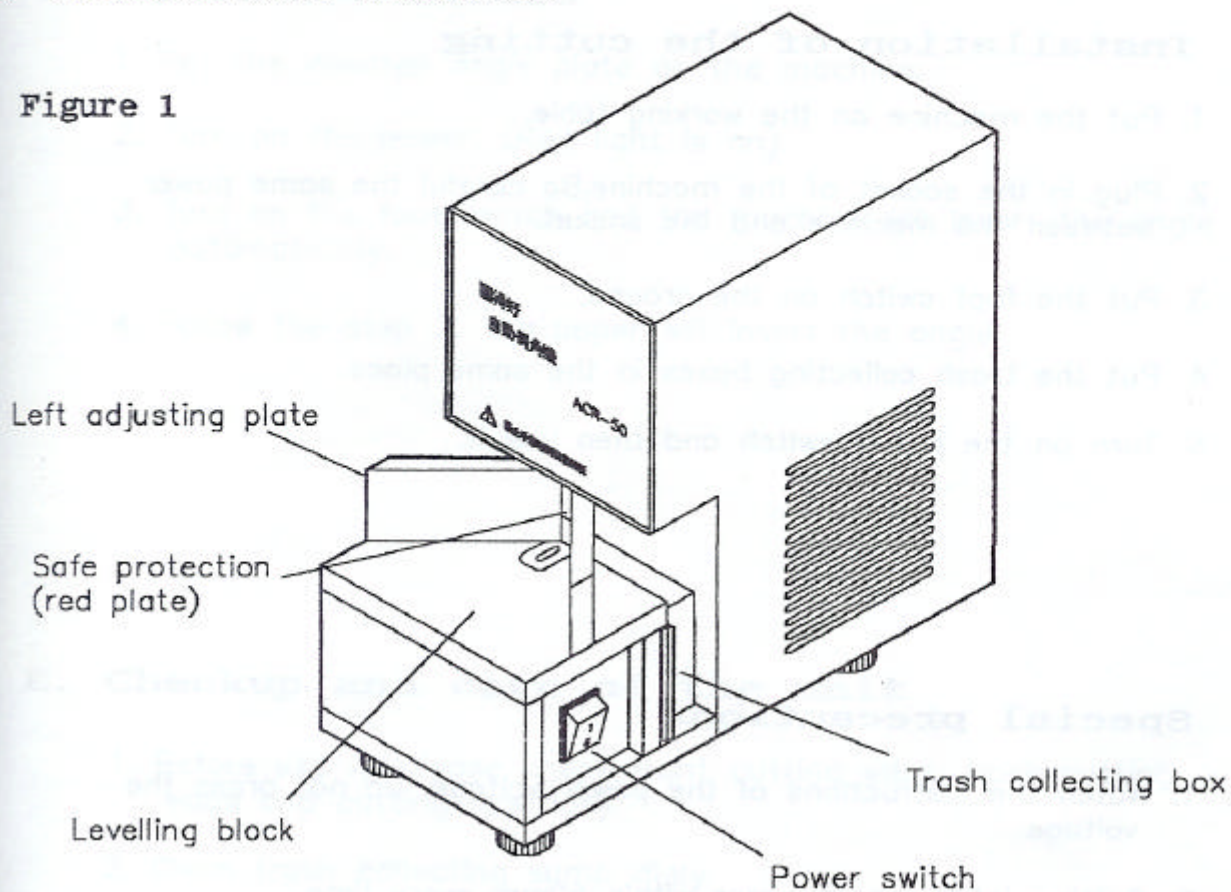
CONTENTS

| | |
|---------------------------------------|---|
| A. Functional manuals | 2 |
| B. Installation of the cutting | 3 |
| C. Special precautions | 3 |
| D. Operation method | 4 |
| E. Checkup and care of the unit | 4 |
| F. Constitutional diagram | 5 |
| G. Parts list | 6 |



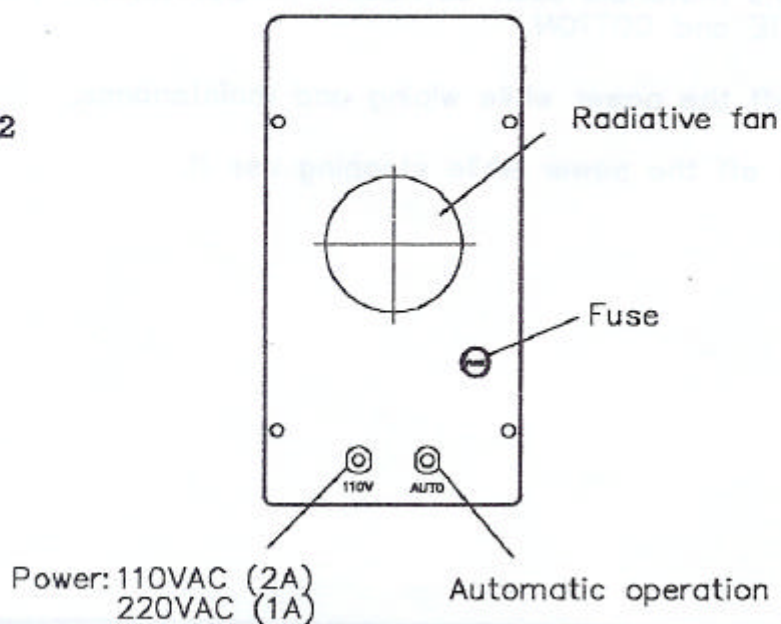
A. Functional manuals

Figure 1



Back of instrument board

Figure 2



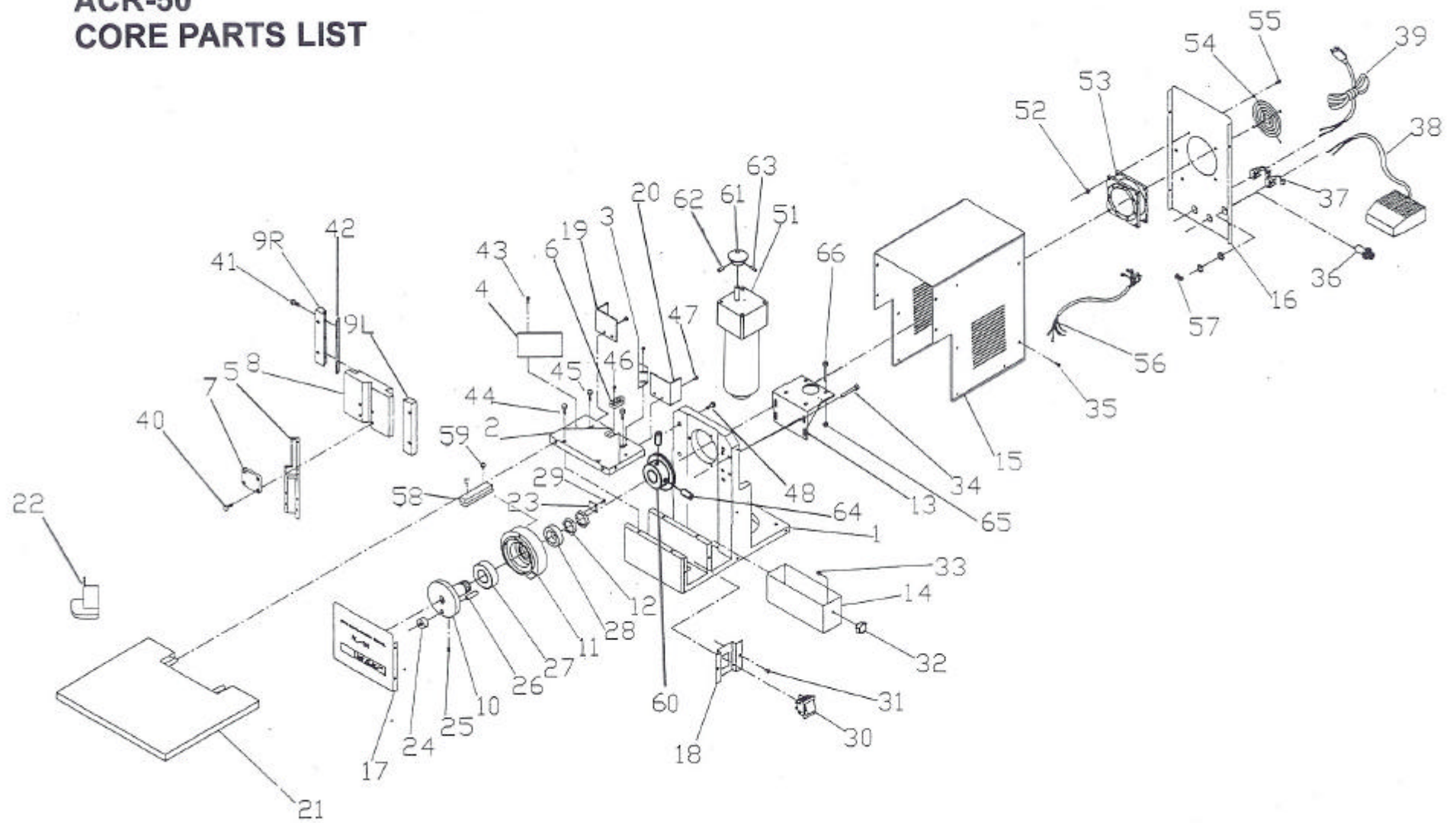
B. Installation of the cutting

1. Put the machine on the working table.
2. Plug in the socket of the machine. Be careful the same power between the machine and the socket.
3. Put the foot switch on the ground.
4. Put the trash collecting boxes in the same place.
5. Turn on the power switch and then use it.

C. Special precautions

1. Watch the instructions of the power voltage. Do not press the voltage.
2. Cutting thickness of paper within 50mm every time.
3. Turn on the power switch and do not use your hands to touch the blade.
4. Do not cut the materials such as ALUMINUM BOARD, IRON PLATE, COPPER PLATE and COTTON.
5. Please turn off the power while wiping and maintenance.
6. Please switch off the power while stopping use it.

ACR-50 CORE PARTS LIST



CORE PARTS SETS FOR ACR-50

| 品代(Part No.) | 品番 | Description | 數量(Q'ty) | 品代(Part No.) | 品番 | Description | 數量(Q'ty) |
|--------------|----------|-------------------------|----------|--------------|----|--------------------------|----------|
| 01 | ACR50-01 | Body | 1 | 43 | # | M4X10L post head screw | 4 |
| 02 | ACR50-02 | Levelling block | 1 | 44 | # | M5X20L post head screw | 2 |
| 03 | ACR50-03 | Left adjusting plate | 1 | 45 | # | M5X15L post head screw | 2 |
| 04 | ACR50-04 | Right adjusting plate | 1 | 46 | # | M4X15L post head screw | 2 |
| 05 | ACR50-05 | Up blade | 1 | 47 | # | M4X10L round head screw | 4 |
| 06 | ACR50-06 | Down blade | 1 | 48 | # | M5X25L post head screw | 4 |
| 07 | ACR50-07 | Pressure plate | 1 | 49 | # | 5x30l key | 1 |
| 08 | ACR50-08 | Tool apron | 1 | 50 | # | M8X20L post head screw | 4 |
| 09 | ACR50-09 | Right starting rail | 1 | 51 | # | Motor | 1 |
| 10 | ACR50-10 | Main shaft | 1 | 52 | # | M4 nut | 4 |
| 11 | ACR50-11 | Main shaft base | 1 | 53 | # | Radiative fan | 1 |
| 12 | ACR50-12 | Nut | 2 | 54 | # | Safety net | 1 |
| 13 | ACR50-13 | Motor holder | 1 | 55 | # | M4X25L round head screw | 4 |
| 14 | ACR50-14 | Trash bin | 1 | 56 | # | Wire assembly | 1st |
| 15 | ACR50-15 | Sealing cover | 1 | 57 | # | Terminal | 1 |
| 16 | ACR50-16 | Rear plate | 1 | 58 | # | Micro-switch | 1 |
| 17 | ACR50-17 | Front plate | 1 | 59 | # | M3X15L round head screw | 2 |
| 18 | ACR50-18 | Power plate | 1 | 60 | # | Gear 61 | 1 |
| 19 | ACR50-19 | Right baffle plate | 1 | 61 | # | Gear 28 | 1 |
| 20 | ACR50-20 | Left baffle plate | 1 | 62 | # | M6X8L Hexagon bolt | 1 |
| 21 | ACR50-21 | Accessories | 1 | 63 | # | 4x20l Pin for spring dia | 1 |
| 22 | ACR50-22 | Regulation board | 1 | 64 | # | M6X8L Hexagon bolt | 2 |
| 23 | ACR50-23 | Control board | 1 | 65 | # | M6 Screw nut | 4 |
| 24 | # | CF8 Roller | 1 | 66 | # | M6x70L Post head screw | 4 |
| 25 | # | M3x5L headless screw | 1 | | | | |
| 26 | # | M8 Nut | 1 | | | | |
| 27 | # | Bearing 6205 | 1 | | | | |
| 28 | # | Bearing 51105 | 1 | | | | |
| 29 | # | M3X5L round head screw | 2 | | | | |
| 30 | # | Switch | 1 | | | | |
| 31 | # | M4X5L round head screw | 2 | | | | |
| 32 | # | Handle bar | 1 | | | | |
| 33 | # | M5X10L round head screw | 1 | | | | |
| 34 | # | M6X15L post head screw | 4 | | | | |
| 35 | # | M4X8L round head screw | 16 | | | | |
| 36 | # | Fuse | 1 | | | | |
| 37 | # | Buckle element | 2 | | | | |
| 38 | # | Foot switch | 1 | | | | |
| 39 | # | Power cord | 1st | | | | |
| 40 | # | M5X15L post head screw | 4 | | | | |
| 41 | # | M5X10L post head screw | 3 | | | | |
| 42 | # | Taper pin | 1 | | | | |

Standard hardware item, available locally

All specifications and designs are subject to change without notice

SPECIFICATIONS :

| | |
|------------------------|------------------------------|
| ROUND SHAPE SIZE | S(R3.5) . M(R6) L(R10) mm |
| CUTTING SIZE IN HEIGHT | 50 mm |
| DIMENSION (WXHXT) | 340x165x315 mm |
| WEIGHT | 19 KG |
| POWER (50/60Hz) | 110/220VAC |
| MOTOR | 60W |