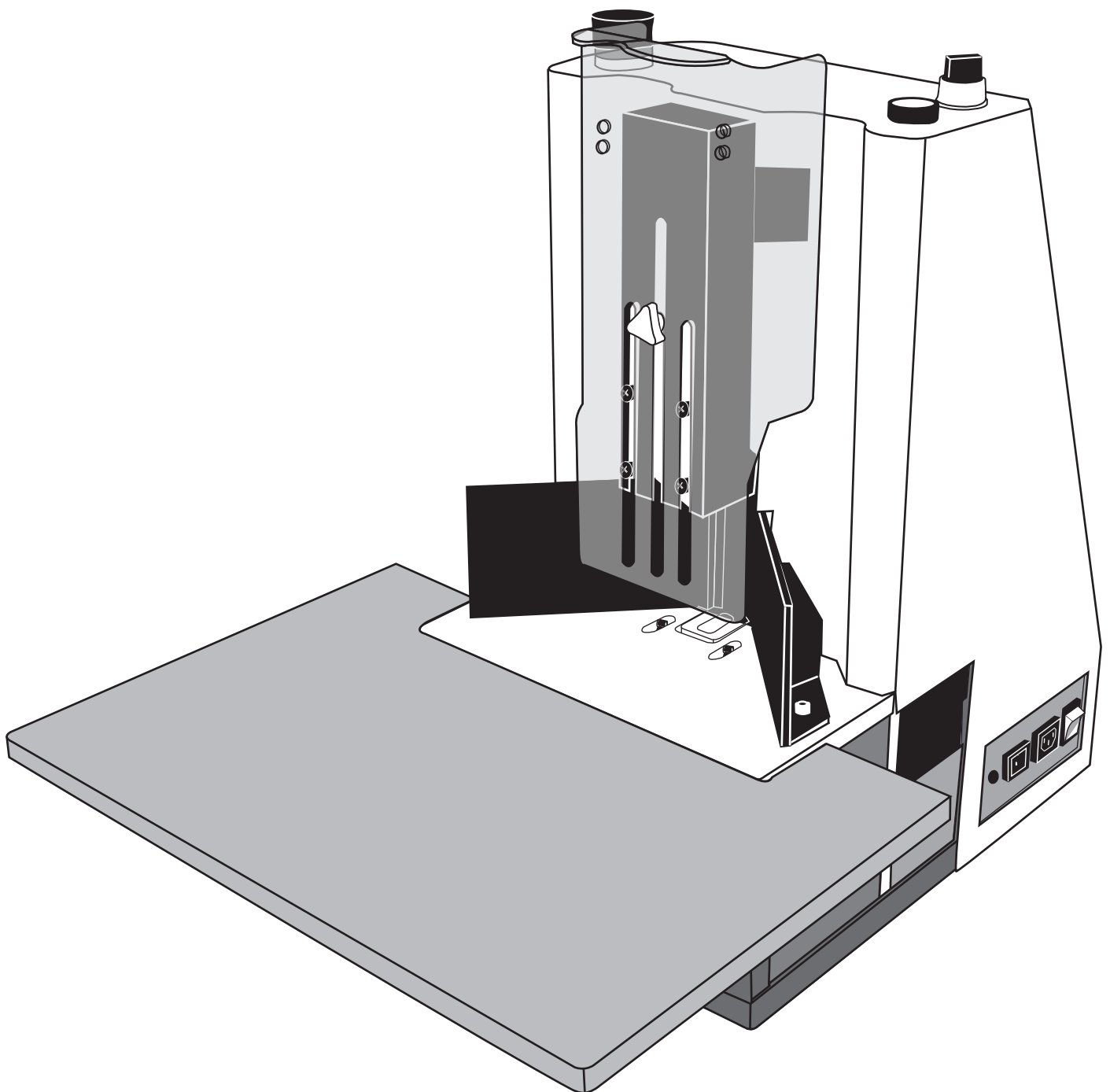


Diamond 8

**Electric Corner Rounding Machine
Operational Manual**



Contents

Introduction

Page 1

Features

Page 1

Operation

Page 2

Changing Cutting Tool

Page 3-4

Introduction of Caution Labels

Page 5

Troubleshooting

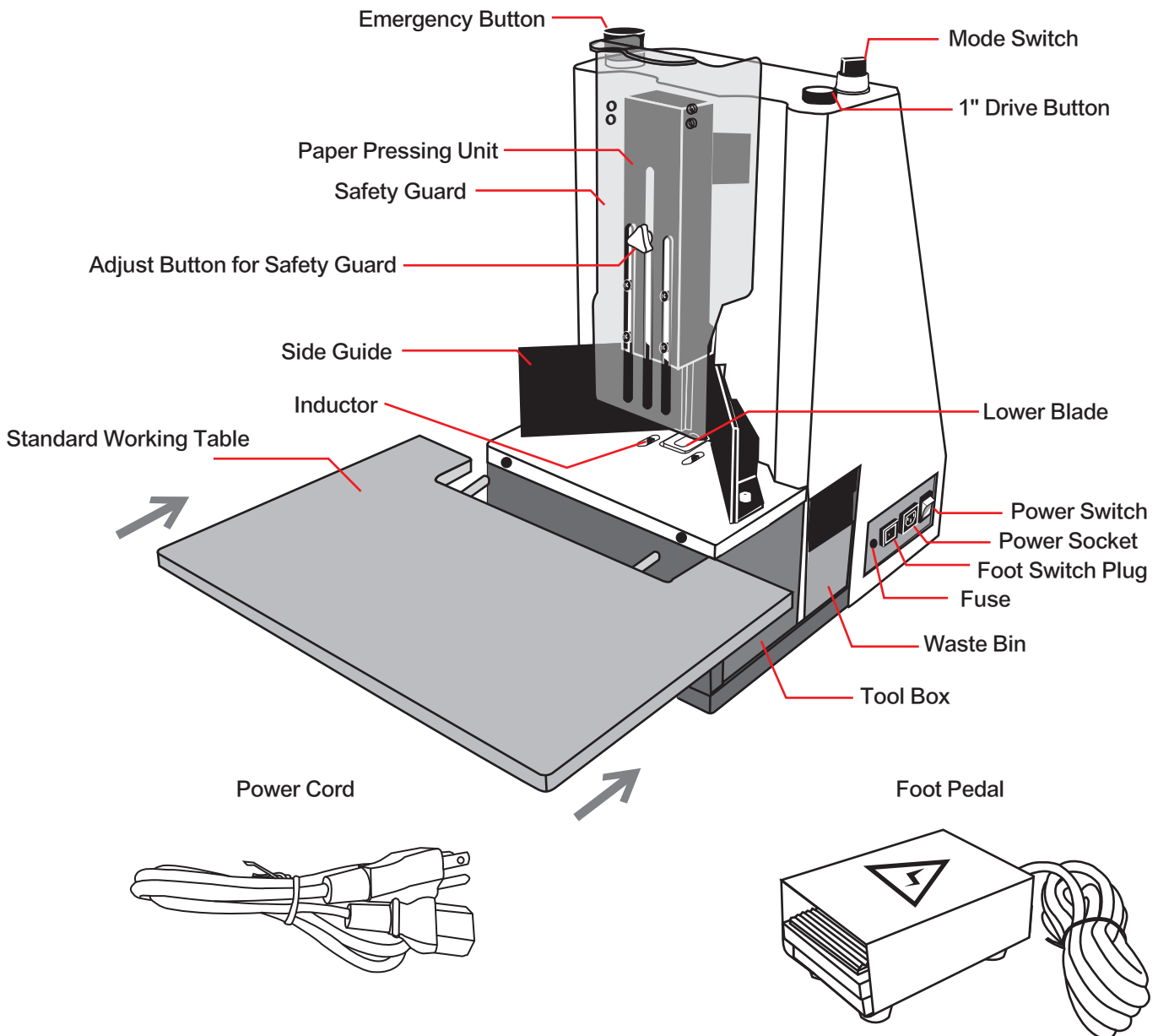
Page 5

Introduction

MODEL	Diamond 8
Item Code	AD8
Max Cutting Capacity	80mm (3")
Suitable Dies	R3.5/R6/R10/R13/R16 (1/8 1/4 3/8 1/2 5/8)
Cutting Operation	Electric
Dimensions (L x W x H)	340 x 290 x 570 mm (13.5" x 11.5" x 22.5")
Machine Weight	45.5kg (100lbs)

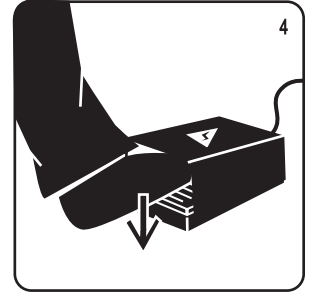
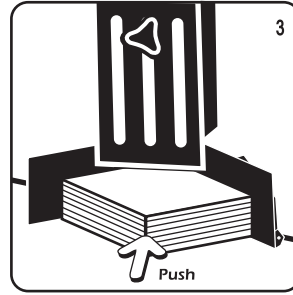
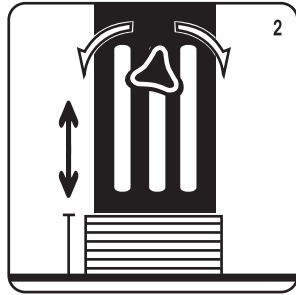
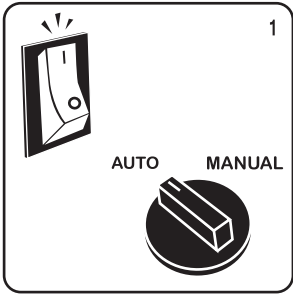
*:When using 80 gsm(20lb) paper

Features



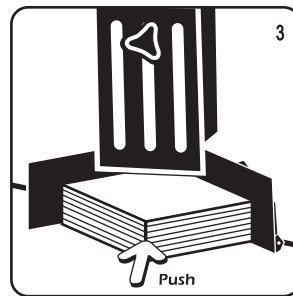
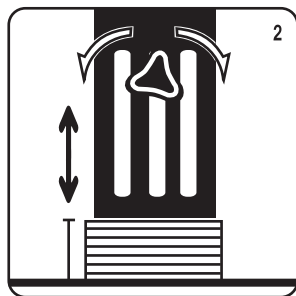
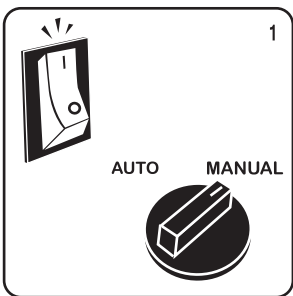
Operation

• Auto Mode



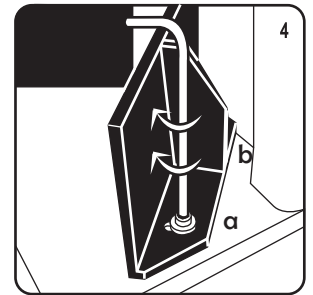
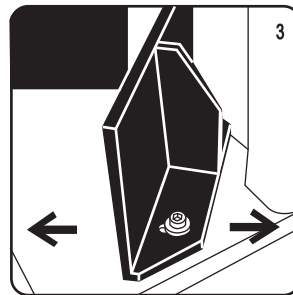
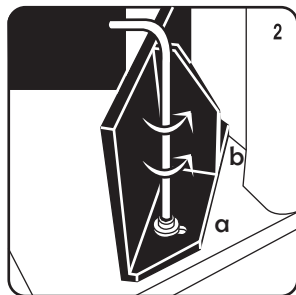
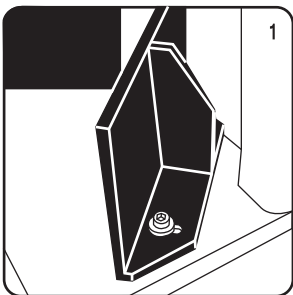
1. Turn on the power and switch to AUTO mode.
2. Unlock adjust button and adjust Safety Guard according to the height of the paper, and lock the button.
3. Push the paper forward evenly.
4. Press the foot pedal to activate.

• Manual Mode



1. Turn on the power and switch to MANUAL mode.
2. Unlock adjust button and adjust Safety Guard according to the height of the paper, and lock the button.
3. Push the paper forward evenly.
4. Press 1" Drive button to activate.

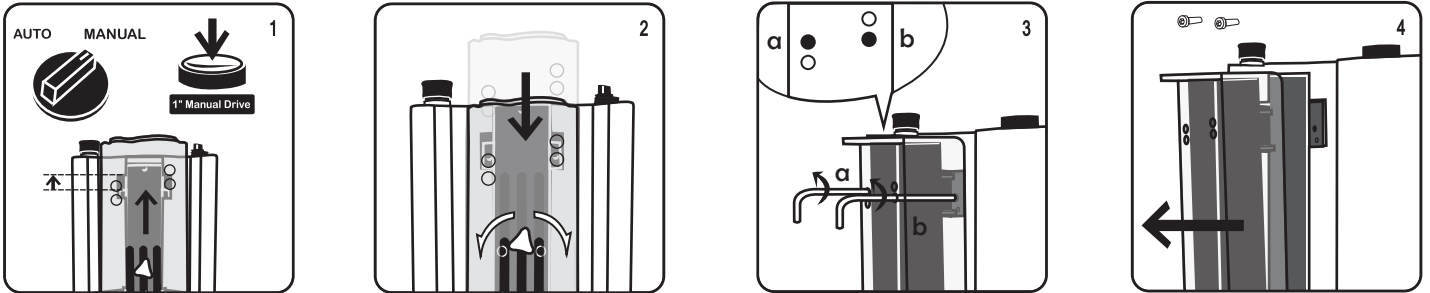
• Adjustment of Side Guide



1. Confirm the position of side guide.
2. Loosen two screws by using Allen key wrench #4.
3. Adjust the side guide position.
4. Tighten two screws by using Allen key wrench #4.

Changing Cutting Tool - 1

- Remove Paper Pressing Unit



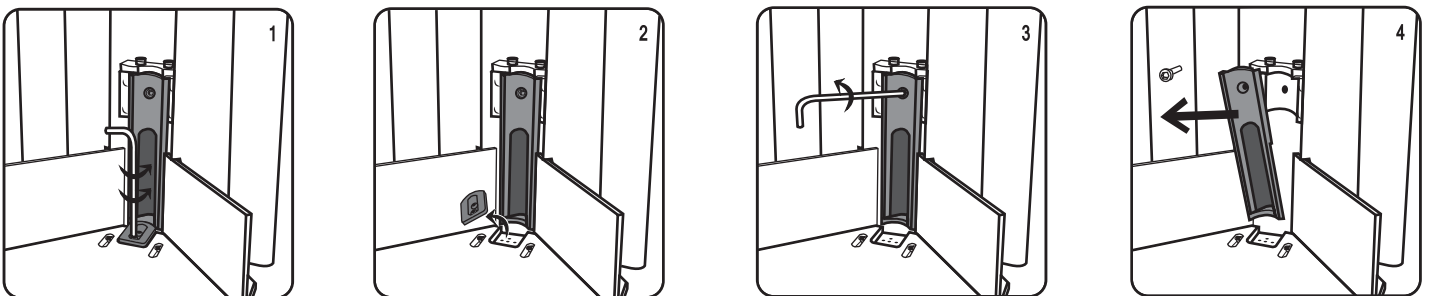
1. Turn on the power and switch to manual mode. Press 1" Drive button and drive Paper Pressing Unit to top position.

2. **Turn off the power.**

Lower Safety Guard by unlocking the adjust button and align the holes with the screws on Paper Pressing Unit.

3. Loosen the screws and take off Paper Pressing Unit by using Allen key wrench #4.

- Remove Cutting Tool



1. Loosen the screw of lower blade by using Allen key wrench #3.

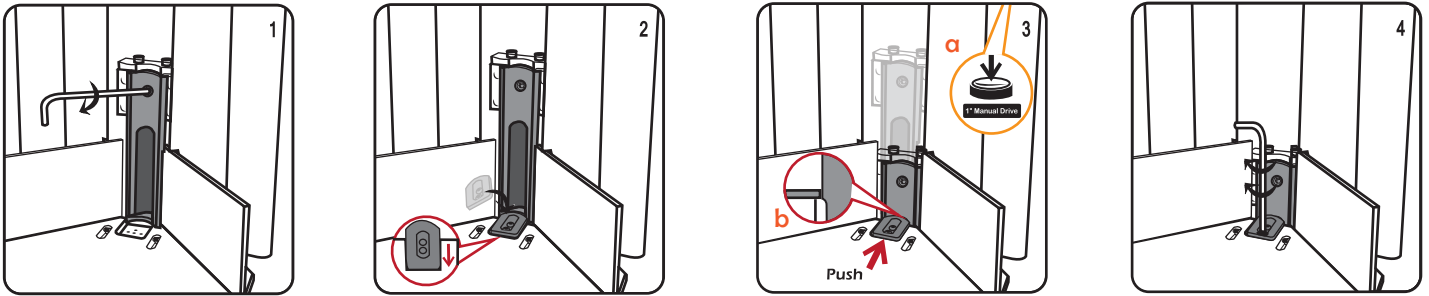
2. Take off the lower blade.

3. Loosen the screw of upper blade by using Allen key wrench #5. Meanwhile, hold the upper blade with other hand and remove carefully.

Caution: the cutting tool is very sharp.

Changing Cutting Tool - 2

• Insert Cutting Tool



1. Tighten the screw of upper blade by using Allen key wrench #5. Meanwhile, hold the upper blade with other hand and remove carefully.

Caution: the cutting tool is very sharp.

2. Place the lower blade in backward position.

Before lowering upper blade to the end, do not push the lower blade forward, so as to avoid damaging the lower blade.

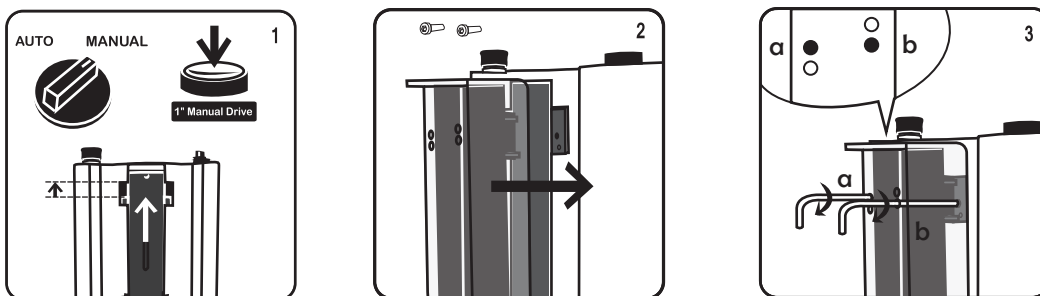
3. **a>** Turn on the power and switch to MANUAL mode.

Lower upper blade to the lowest position by pressing 1" Drive button.

b> Turn off the power. Push lower blade close to upper blade for alignment.

4. Tighten the screw on lower blade by using Allen key wrench #3.

• Assemble Paper Pressing Unit



1. Turn on the power and switch to MANUAL mode.

Press 1" Drive button to drive Paper Pressing Unit to top position.

2. **Turn off the power** and install Safety Guard back on to Paper Pressing Unit.

3. Tighten the screws of Paper Pressing Unit by using Allen key wrench #4.

Introduction of Caution Labels



Always connect correct voltage before operation.



When pressing down this button, the machine stops during all modes.

Release the emergency stop button by turning it counter-clockwise.



Always turn off the power when changing cutting tool. The cutting tools are very sharp, please handle with caution.



Do not insert fingers inside Safety Guard during operation.



Empty waste when the waste bin is half full to avoid damaging the cutting tools.

Troubleshooting

When paper jams, please turn off the power first and empty the waste bin.

Turn on the power and switch to MANUAL mode. Drive the cutting tool to top position by pressing 1” Drive button. Clear the waste in cutting area and continue operation.

