

# WIREFMAC+COMBO OPERATIONAL MANUAL

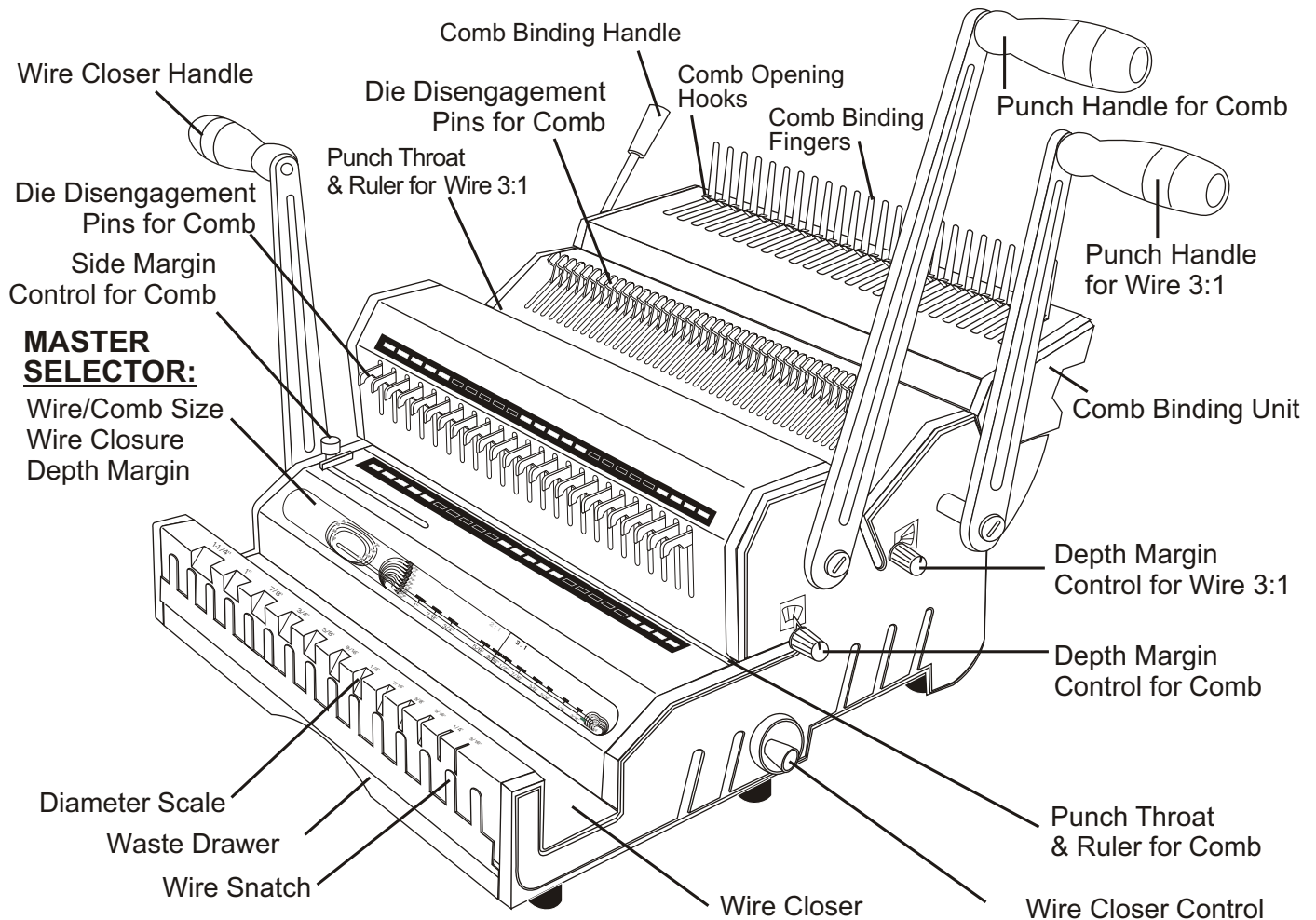
## INTRODUCTION

CONGRATULATIONS ON THE PURCHASE OF YOUR NEW **WIREFMAC+COMBO**, A PROFESSIONAL AND HEAVY-DUTY WIRE & COMB PUNCH AND BINDING MACHINE. YOUR **WIREFMAC+COMBO** WAS DESIGNED WITH A FULL RANGE OF FUNCTION AND PREMIUM QUALITY COMPONENTS TO GUARANTEE YOU AN EFFORTLESS AND PROFESSIONAL BIND, AS WELLAS MANY YEARS OF TROUBLE-FREE SERVICE.

## IMPORTANT

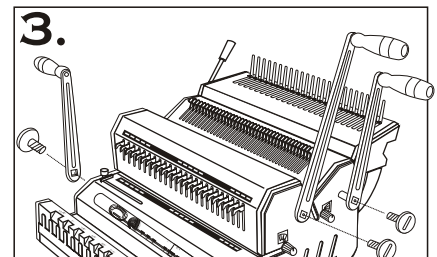
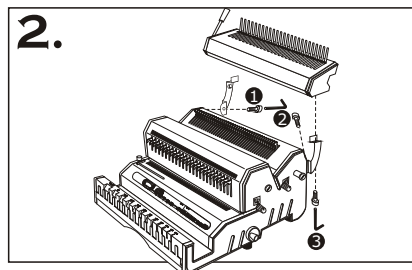
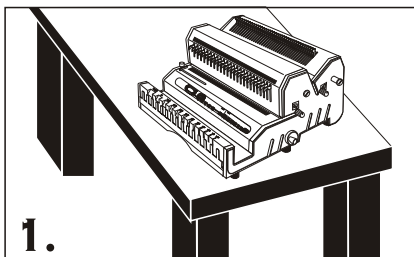
WE RECOMMEND THAT YOU TAKE A FEW MINUTES TO FAMILIARIZE YOURSELF WITH THE FUNCTIONS OF YOUR NEW **WIREFMAC+COMBO**. YOU WILL FIND THAT WITH JUST A LITTLE PRACTICE, ANY PERSON CAN ACHIEVE PROFESSIONAL RESULTS.

## FEATURES



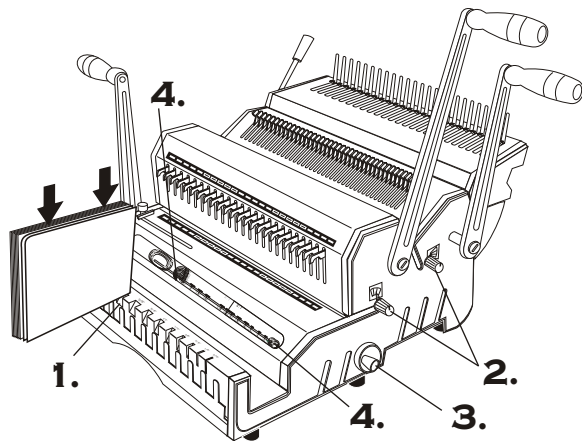
## ASSEMBLY

1. Place your new **WIREFMAC+COMBO** on top of a sturdy working table.
2. Install Comb Binding unit to machine as illustrated.
3. Remove the screw from punching axle **clockwise** as indicated, connect the 2 **Punch Handles**, ( the longer one for comb and the shorter one for wire 3:1 ) in a vertical position onto the Punch Axle. Tighten-back the screws counter clockwise. Repeat the same for **Closer Handle** ( The shorter one ).



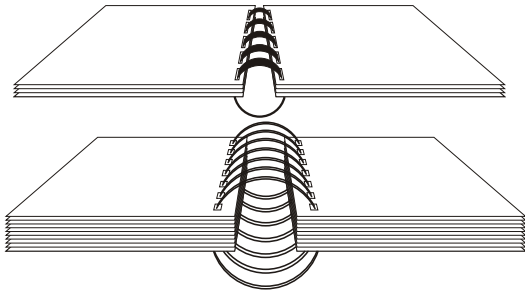
# SET-UP

Insert a full unbound document into **Diameter Scale**.

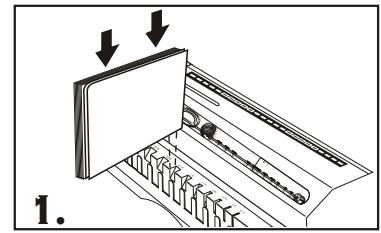


## TIPS

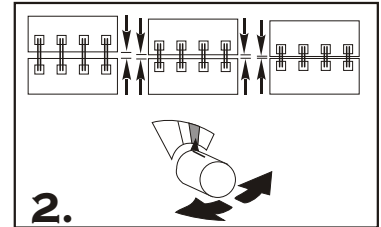
For easy turning of pages, make sure you have the right depth margin for punch. The greater the number of pages, the deeper the punch margin required.



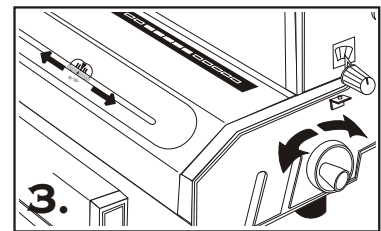
1. Based on **Diameter Scale** reading, on the **Master Selector** you will see :
  - Depth Margin of punch
  - Wire Closure
  - Wire Size & Comb Size



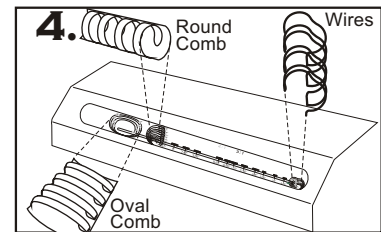
2. Set **Depth Margin Control** to the color determined from Step 1. Color indicated on **Depth Margin Control** should match color on **Master Selector**.



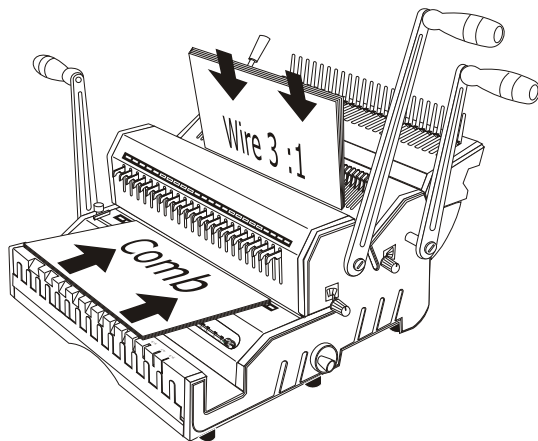
3. Set **Wire Closer Control** to the wire closure size determined from Step 1.



4. ( If needed ) Use **Master Selector** to select / identify the size of your wires or combs.



# PUNCHING



## TIPS

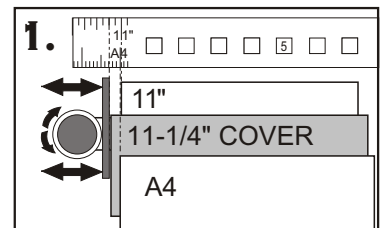
Maximum single punching:  
20 sheets of 20 Lbs  
( 70-80g/m<sup>2</sup> ) paper.

Comfortable single punching:  
12-15 sheets of 20 Lbs  
( 70-80 g/m<sup>2</sup> ) paper. ( **Recommended** )

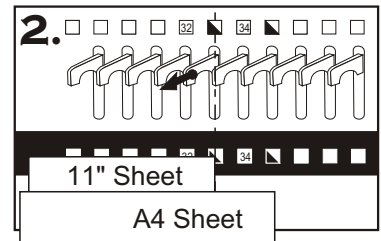
Punch inner sheets and covers separately as side margin may vary.

Re-Align ( Center ) margins for oversize covers.

1. Align **Side Margin Control** to proper sheet & cover size.  
Note: There are different side margins for 11" sheets & their 11-1/4" covers.

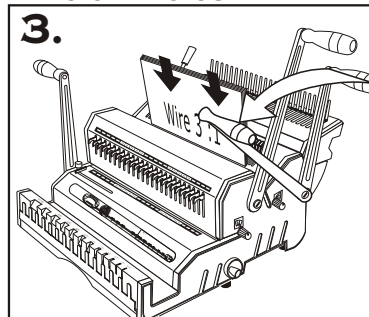


2. Pull out **Disengagement Pins** to avoid partially punched holes.

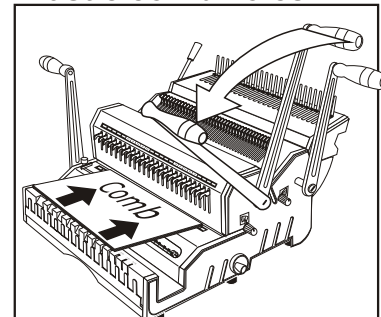


3. Insert sheets and pull handle to punch.

## Wire 3:1 holes

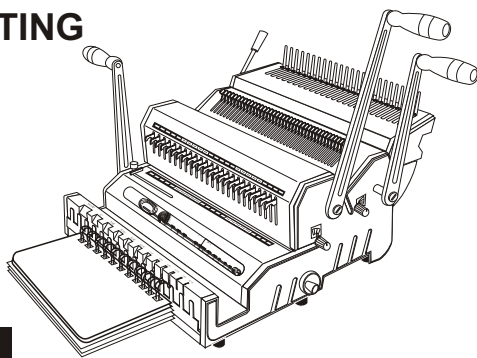


## Plastic comb holes



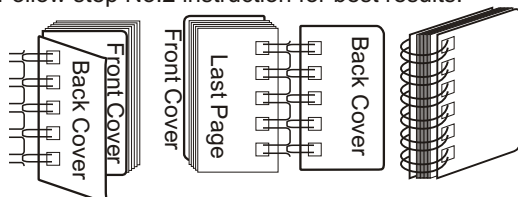
# WIRE BINDING

## INSERTING



### TIPS

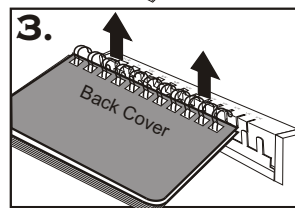
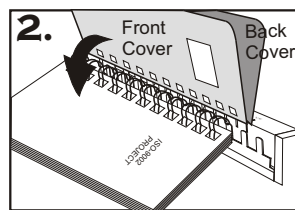
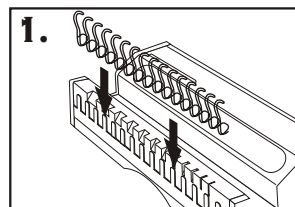
The seam of closed wire should be inside the book. Follow step No.2 instruction for best results.



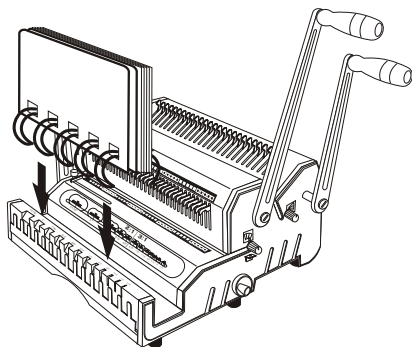
1. Insert pre-selected wire into **Wire Snatch**

2. Insert document from last pages to first pages then insert front cover. The back cover should be inserted last with inside facing up.

3. Take out inserted document from **Wire Snatch** to close the wire.

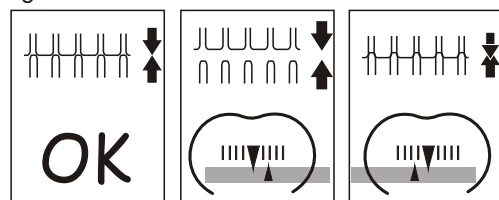


## CLOSING



### TIPS

The seam of closed wire should be just touching. Slightly adjust the **Closer Control** a little left or right for the under-closed or over-closed seam.

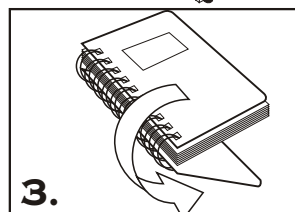
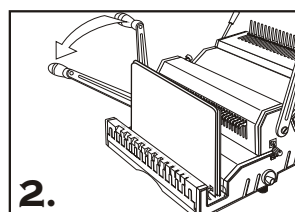
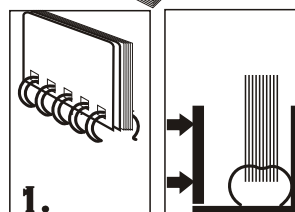


1. Put inserted document into **Wire Closer**.

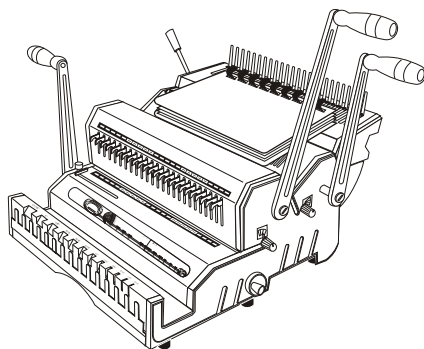
The wire element must stand horizontally at the bottom of **Wire Closer**.

2. Pull **Closer Handle** forward to close.

3. Take out document and turn back cover over. The wire binding is complete.



# COMB BINDING

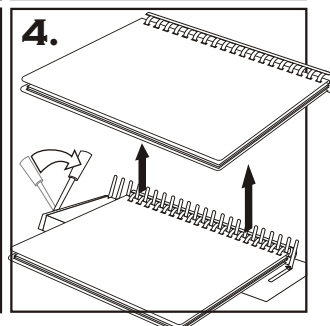
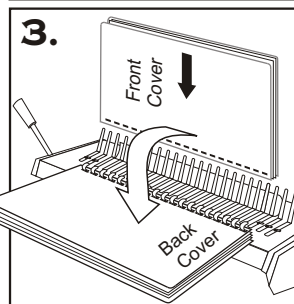
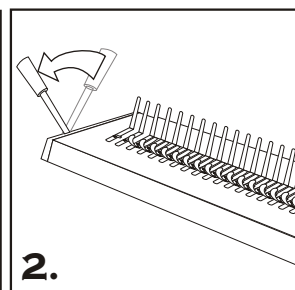
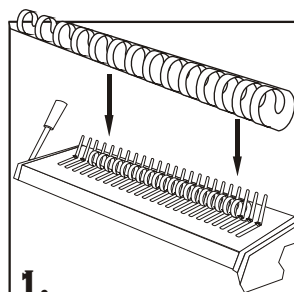


1. Place pre-selected comb behind Comb Binding Fingers. The comb opening side should be upward.

2. Slowly pull Comb Binding Handle forward to open comb until the comb binder is opened sufficiently to allow pages and covers to be inserted.

3. Neatly align the pages and covers. Holding the documents tightly with the front towards you, feed the comb through the holes.

4. When all comb are fully positioned through the holes, slowly move handle backward to close the comb. Lift out the bound documents from fingers. The comb binding is complete.



# TECHNICAL INFORMATION

Size	Wire 3 : 1 ( 3 HOLES PER INCH )	Comb 9/16" ( 14.28mm )	
	<div><div></div><div></div><div></div><div></div><div></div><div></div><div></div><div></div></div>	<div><div></div><div></div><div></div><div></div><div></div></div>	
Punching Length	<div><div>14"</div><div>= 40 Holes</div></div> <div><div>LEGAL</div><div>= 38 Holes</div></div> <div><div>A4</div><div>= 34 Holes</div></div> <div><div>11"</div><div>= 32 Holes</div></div> <div><div>8.5"</div><div>= 24 Holes</div></div> <div><div>A5</div><div>= 24 Holes</div></div>	<div><div>14"</div><div>= 24 Holes</div></div> <div><div>LEGAL</div><div>= 23 Holes</div></div> <div><div>A4</div><div>= 21 Holes</div></div> <div><div>11"</div><div>= 19 Holes</div></div> <div><div>8.5"</div><div>= 15 Holes</div></div> <div><div>A5</div><div>= 14 Holes</div></div>	
Binding Capacity	<div><div>Sheets</div><div>70-80 g/m<sup>2</sup></div></div> <div><div>Diameters</div><div>Inch</div><div>mm</div></div>	<div><div>Sheets</div><div>70-80 g/m<sup>2</sup></div></div> <div><div>Diameters</div><div>Inch</div><div>mm</div></div>	
	<div><div>WIRE 3:1</div></div>	<div><div>ROUND COMB</div></div>	
	<div><div>20</div><div>3/16</div><div>4.5</div></div>	<div><div>30</div><div>1/4</div><div>6</div></div>	
	<div><div>30</div><div>1/4</div><div>6</div></div>	<div><div>50</div><div>5/16</div><div>8</div></div>	
	<div><div>50</div><div>5/16</div><div>8</div></div>	<div><div>60</div><div>3/8</div><div>9</div></div>	
	<div><div>60</div><div>3/8</div><div>9</div></div>	<div><div>80</div><div>7/16</div><div>10</div></div>	
	<div><div>80</div><div>7/16</div><div>10</div></div>	<div><div>100</div><div>1/2</div><div>12</div></div>	
	<div><div>100</div><div>1/2</div><div>12</div></div>	<div><div>120</div><div>9/16</div><div>15</div></div>	
	<div><div>120</div><div>9/16</div><div>15</div></div>	<div><div>140</div><div>5/8</div><div>16</div></div>	
	<div><div>WIRE 2:1</div></div>	<div><div>160</div><div>3/4</div><div>20</div></div>	
	<div><div>140</div><div>5/8</div><div>16</div></div>	<div><div>190</div><div>7/8</div><div>22</div></div>	
	<div><div>160</div><div>3/4</div><div>20</div></div>	<div><div>220</div><div>1</div><div>25</div></div>	
	<div><div>190</div><div>7/8</div><div>22</div></div>	<div><div>240</div><div>1-1/8</div><div>28</div></div>	
	<div><div>220</div><div>1</div><div>25</div></div>	<div><div>OVAL COMB</div></div>	
	<div><div>280</div><div>1-1/4</div><div>32</div></div>	<div><div>280</div><div>1-1/4</div><div>32</div></div>	
		<div><div>310</div><div>1-1/2</div><div>38</div></div>	<div><div>350</div><div>1-3/4</div><div>45</div></div>
		<div><div>400</div><div>2</div><div>50</div></div>	

# WARRANTY POLICY

YOUR **WIREMAC+COMBO** HAS A WARRANTY OF ONE YEAR FROM DATE OF PURCHASE. IN THE EVENT OF A MANUFACTURER'S DEFECT, YOUR DISTRIBUTOR (AT OPTION) WILL REPAIR OR REPLACE IT. IMPORTANT: THIS WARRANTY DOES NOT COVER DAMAGES DUE TO IMPROPER USE OR MISS TREATMENT OF THE UNIT, INCLUDING ANY EXTRAORDINARY EVENT LEADING TO THE DAMAGE OF THE MACHINE, WHETHER IT IS REVERSIBLE OR NOT.

IF THE **WIREMAC+COMBO** IS NOT WORKING PROPERLY, FIRST FOLLOW THE CORRECTIVE ACTIONS ABOVE. IF THE PROBLEM PERSISTS, PLEASE CONTACT YOUR DEALER FOR FURTHER INSTRUCTIONS. PLEASE HAVE YOUR MACHINE'S SERIAL NUMBER AND THE PURCHASE DATE READY. IF THE MACHINE MUST BE RETURNED TO YOUR DISTRIBUTOR, IT IS YOUR RESPONSIBILITY TO PROPERLY PACK AND SHIP IT. AS ANY DAMAGES INCURRED DURING ITS TRANSPORTATION IS NOT COVERED BY OUR WARRANTY POLICY.