



PRECISION

DURABLE

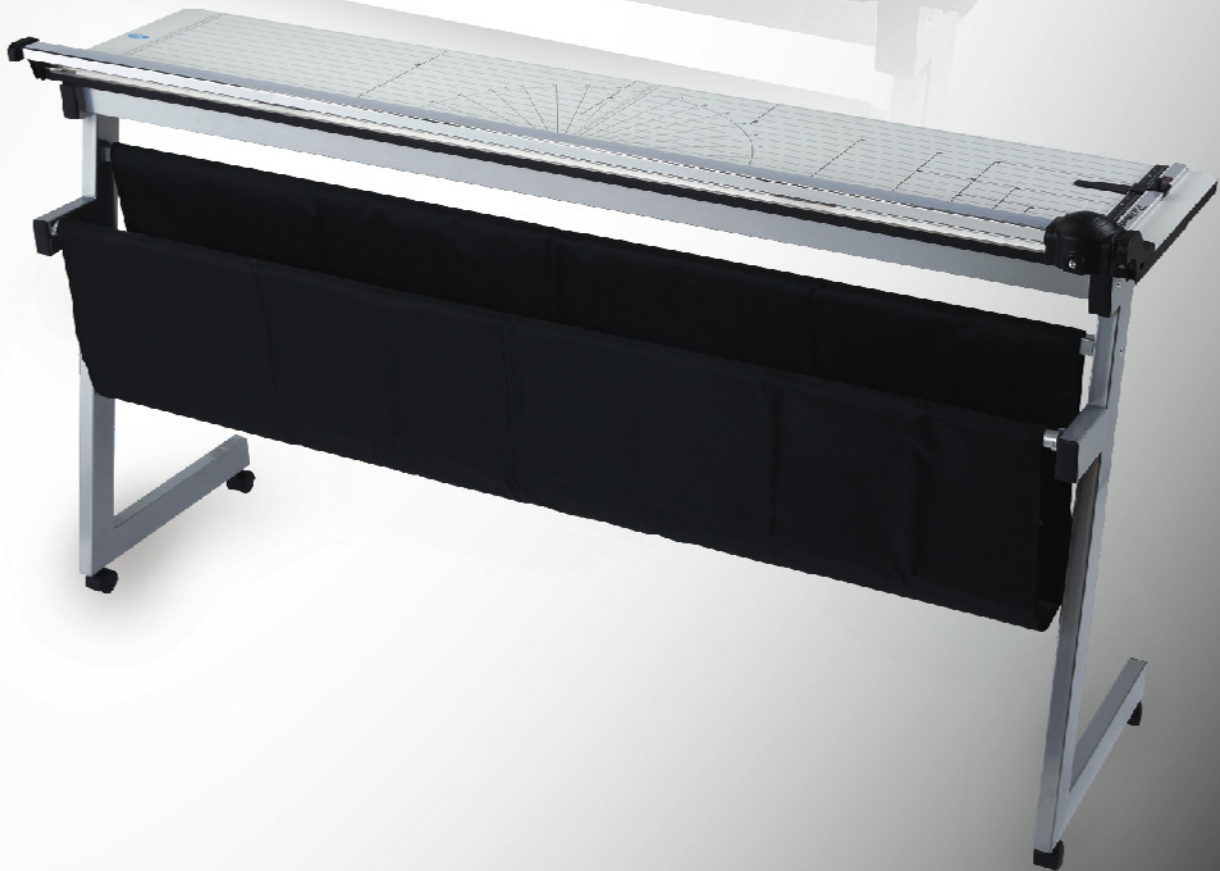
SAFE

## ROTARY TRIMMER - OFFICE/DIGITAL PRINTERS

### FEATURES :

- Self-Sharpening Tungsten Rotary Blade : For durability & a sharp cut every time.
- Transparent Clamping Bar :  
Hold the trimming material in place while allowing you to monitor the trimming process.
- Side Guide & Adjustable Depth Guide : For an easy & precise alignment.
- Trimming Materials :  
Paper, newsprint, cardboard, plastic films, vellum, aluminum foil, vinyl, pvc, polyester, polypropylene, polyethylene, leather, veneer, etc.
- ROLL@BLADE 1600 - Work Station is included.

**Roll@Blade 1600**



**SPECIFICATIONS :**

MODEL	Roll@Blade 460	Roll@Blade 680	Roll@Blade 920	Roll@Blade 1600
Item Code	TM460	TM680	TM920	TM1600
Max. Trimming Length	18"(457mm)	27"(685mm)	36"(920mm)	64"(1600mm)
Table Dimensions	18"x15"	27"x15"	36"x15"	64"x15"
Cutting Capacity	15 sheets (20lbs)	15 sheets (20lbs)	10 sheets (20lbs)	10 sheets (20lbs)
Machine Dimensions	645x485x110mm	775x485x110mm	1010x485x110mm	1690x485x110mm
Machine Weight	5.6kg	7.4kg	8.5kg	14kg
Package Dimensions	775x550x160mm	1000x550x160mm	1210x550x160mm	1935x550x160mm/1770x790x80mm
Package Weight	7.8kg	9.7kg	11.2kg	18.2kg/20.1kg

