

TECHNICAL INFORMATION

Size	Comb 9/16" (14.28mm)		
Binding Format	14"	=	24 Holes
	LEGAL	=	23 Holes
	A4	=	21 Holes
	11"	=	19 Holes
	8.5"	=	15 Holes
Capacity & Diameter	Sheets	Diameters	
	70-80 g/m ²	Inch	mm
	ROUND COMB		
	30	1/4	6
	50	5/16	8
	60	3/8	9
	80	7/16	10
	100	1/2	12
	120	9/16	15
	140	5/8	16
160	3/4	20	
190	7/8	22	
220	1	25	
240	1-1/8	28	
	Sheets	Diameters	
	70-80 g/m ²	Inch	mm
OVAL COMB			
280	1-1/4	32	
310	1-1/2	38	
350	1-3/4	45	
400	2	50	

BINDING FORMAT

	Coil 4:1V oval	Coil 4:1	Coil 5:1	Coil 06
Legal (14" or 356 mm)	= 54 + 2 holes	= 53 + 2 holes	= 65 + 5 holes	= 55 + 2 holes
Oficio (13" or 330 mm)	= 52 holes	= 53 holes	= 65 holes	= 54 holes
A4 (11.69" or 297 mm)	= 47 holes	= 46 holes	= 59 holes	= 49 holes
Letter (11" or 279 mm)	= 44 holes	= 43 holes	= 55 holes	= 46 holes
A5 (8.27" or 210 mm)	= 33 holes	= 33 holes	= 41 holes	= 34 holes
1/2 Letter (8.5" or 215.9 mm)	= 34 holes	= 32 holes	= 42 holes	= 35 holes

Capacity & Diameter	No. Sheets (20 lbs)	DOCUMENT		COIL	No. Sheets (20 lbs)	DOCUMENT		COIL
		inch	mm	mm		inch	mm	mm
	25	1/8"	3.2 mm	5 mm	180	3/4"	19.0 mm	20 mm
	35	5/32"	4.0 mm	6 mm	200	25/32"	19.8 mm	22 mm
	45	3/16"	4.8 mm	7 mm	230	7/8"	22.2 mm	25 mm
	60	1/4"	6.4 mm	8 mm	250	1 "	25.4 mm	28 mm
	70	9/32"	7.2 mm	9 mm	280	1-1/16"	27.0 mm	30 mm
	80	5/16"	7.9 mm	10 mm	300	1-1/8"	28.5 mm	32 mm
	100	13/32"	10.3 mm	12 mm	350	1-5/16"	33.3 mm	38 mm
	120	15/32"	11.9 mm	14 mm	400	1-9/16"	39.7 mm	45 mm
	150	19/32"	15.0 mm	17 mm	450	1-7/8"	47.5 mm	50 mm

WARRANTY POLICY

YOUR **DUOMAC-ECI** HAS A WARRANTY OF ONE YEAR FROM DATE OF PURCHASE. IN THE EVENT OF A MANUFACTURER'S DEFECT, YOUR DISTRIBUTOR (AT OPTION) WILL REPAIR OR REPLACE IT. IMPORTANT: THIS WARRANTY DOES NOT COVER DAMAGES DUE TO IMPROPER USE OR MIS TREATMENT OF THE UNIT, INCLUDING ANY EXTRAORDINARY EVENT LEADING TO THE DAMAGE OF THE MACHINE, WHETHER IT IS REVERSIBLE OR NOT.

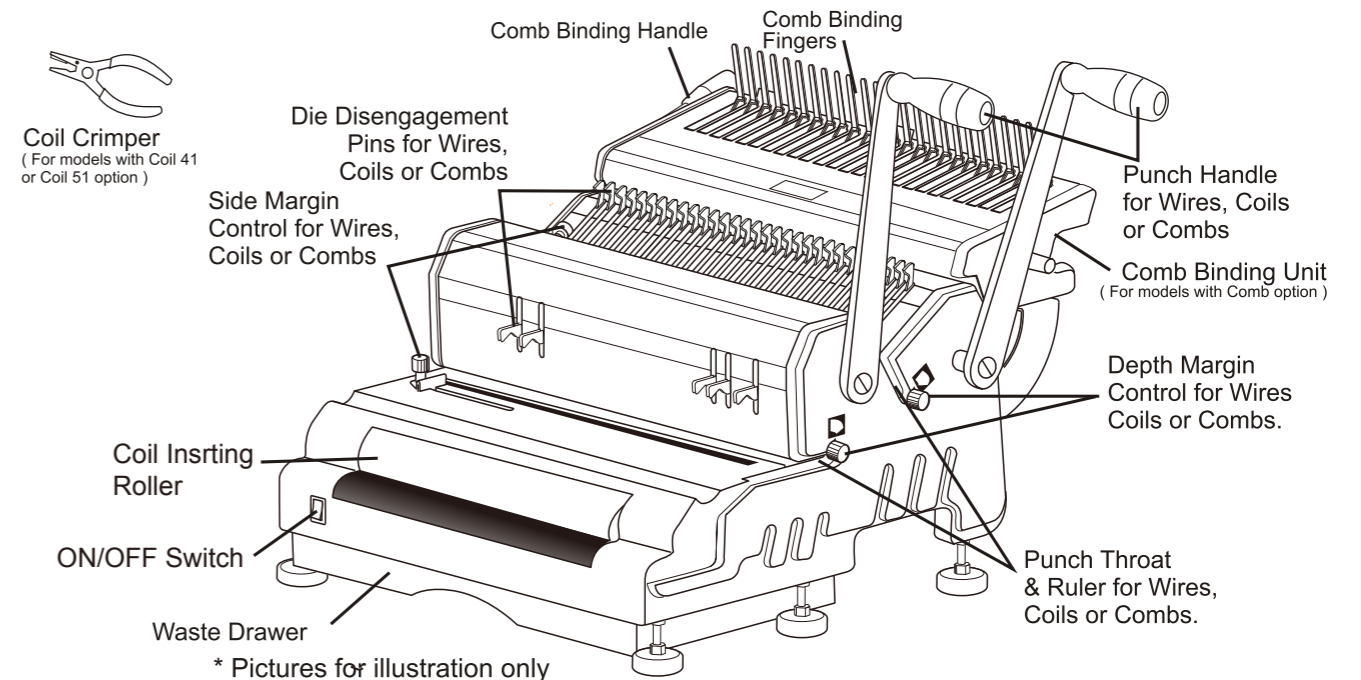
IF THE **DUOMAC-ECI** IS NOT WORKING PROPERLY, PLEASE CONTACT YOUR DEALER FOR FURTHER INSTRUCTIONS. PLEASE HAVE YOUR MACHINE'S SERIAL NUMBER AND THE PURCHASE DATE READY. IF THE MACHINE MUST BE RETURNED TO YOUR DISTRIBUTOR, IT IS YOUR RESPONSIBILITY TO PROPERLY PACK AND SHIP IT. AS ANY DAMAGES INCURRED DURING ITS TRANSPORTATION IS NOT COVERED BY OUR WARRANTY POLICY.

DUOMAC-ECI OPERATIONAL MANUAL

INTRODUCTION

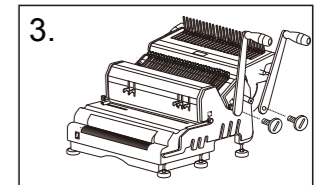
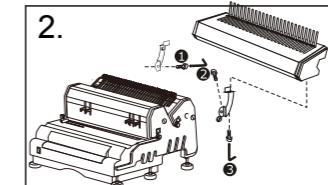
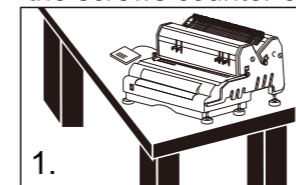
CONGRATULATIONS ON THE PURCHASE OF YOUR NEW **DUOMAC-ECI**, A PROFESSIONAL AND HEAVY-DUTY PUNCH AND BINDING MACHINE FOR COILS AND COMBS. YOUR **DUOMAC-ECI** WAS DESIGNED WITH A FULL RANGE OF FUNCTIONS AND PREMIUM QUALITY COMPONENTS TO GUARANTEE YOU AN EFFORTLESS AND PROFESSIONAL BIND, AS WELL AS MANY YEARS OF TROUBLE-FREE SERVICE. WE RECOMMEND THAT YOU TAKE A FEW MINUTES TO FAMILIARIZE YOURSELF WITH THE FUNCTIONS OF YOUR NEW **DUOMAC-ECI** YOU WILL FIND THAT WITH JUST A LITTLE PRACTICE, ANY PERSON CAN ACHIEVE PROFESSIONAL RESULTS.

FEATURES

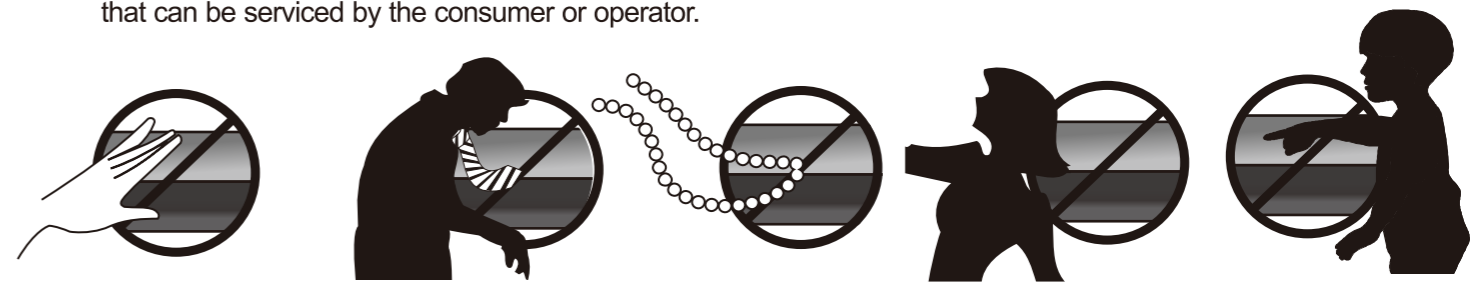


ASSEMBLY



1. Place your new **DUOMAC-ECI** on top of a sturdy working table.
2. (For models with Comb binding unit) Install Comb Binding unit to machine as illustrated.
3. Remove the screw from punching axle **clockwise** as indicated, connect the 2 **Punch Handles**, (the longer one in front and the shorter one in rear) in a vertical position onto the Punch Axle. Tighten-back the screws counter clockwise.



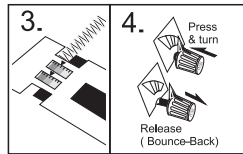
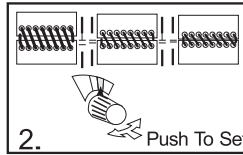
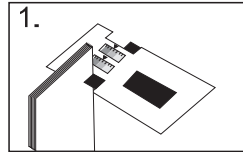
4. Keep fingers, hair, jewelry, necktie and any loose clothing or objects away from roller, as they may be accidentally pulled into the roller.
5. Do not allow children to operate the machine. The **DUOMAC-ECI** is not a toy.
6. Always turn switch-off and place foot pedal out of reach when machine is not in use.
7. To reduce the risk of electric shock, never operate the **DUOMAC-ECI** near water.
8. Do not use the **DUOMAC-ECI** if power cord is damaged.
9. Do not allow the electric cord to be in contact with hot surfaces.
10. In case of malfunction, return the unit to your distributor for service. This equipment does not contain any part that can be serviced by the consumer or operator.



SET-UP

1. Use Coil Size Guide to determine the correct:
 - Depth Margin 
 - Coil Diameter 

See Picture 1
2. To adjust the correct Punching Margin, press and rotate the Depth Margin Control. **See Picture 2**
3. (OPTIONAL) You may use the Coil Diameter Selector to determine or double check that you are using the correct coil diameter for your document. **See Picture 3**

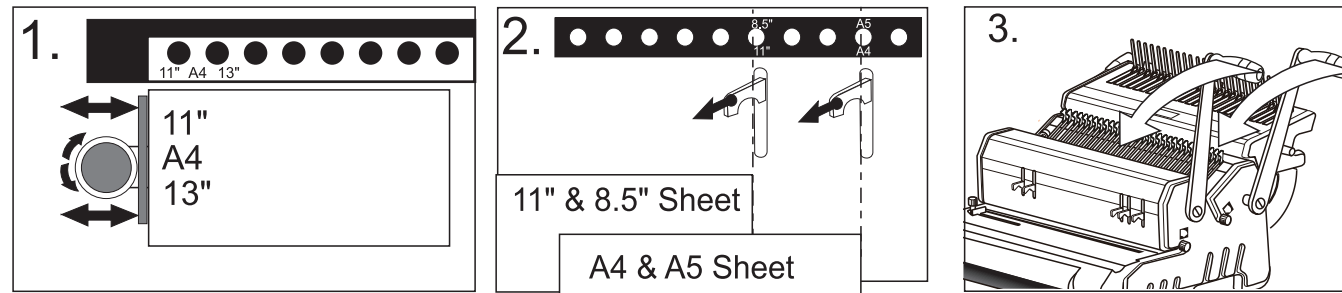


HINT

To properly adjust the depth margin, press and rotate the Depth Margin Control at the same time. Release it upon reaching the desired position. **The Depth Margin Control button must bounce-back upon release. If it does not bounce-back, rotate it slightly back and forth until it does so. See picture 4**

PUNCHING

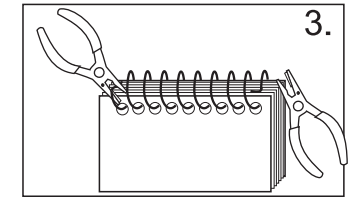
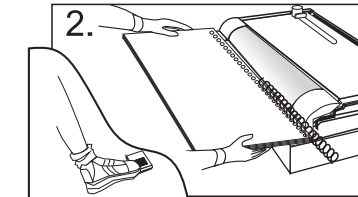
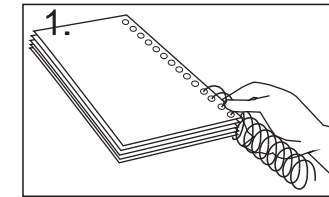
1. Use the Punch Throat Ruler and Side Margin Control to center the punching of your document. **See Picture 1 & 2.** **HINT:** Insert a sheet and make sure you disengage any hole that is left partially exposed on the Punch Throat Ruler. Failing to do so, will leave a partially perforated hole at the edge of your document.
 - (For **DUOMAC-ECI41** models) Various disengageable pins can be found at strategically designed positions, to avoid partially perforated holes in most common sheet sizes (such as 11", 8-1/2", 14", A4 & A5, etc).
 - (For **DUOMAC-ECI41+** model) Full disengageable pins guarantee a clean punch on any standard or custom size sheets. Also, our specially designed 0.2475" Pitch gives you 44 evenly centered holes in a 11" sheet, which results in adequate hole to edge-of-sheet margins and easier coil insertion.
2. Insert sheets and pull handle toward you to punch. **See picture 3**



COIL INSERTING (BINDING)

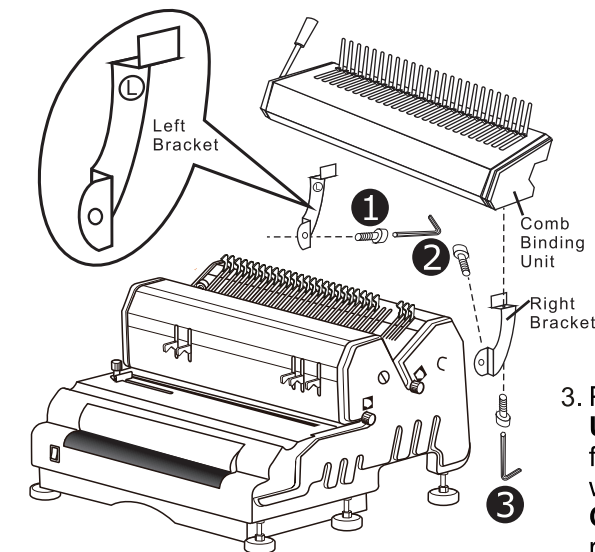
1. Align punched document and place it on top of machine or table. Insert the coil into the first 4 to 5 holes. **See picture 1**
2. Hold document evenly against roller (coil must slightly touch the roller). **See picture 2**
3. Press foot pedal. The coil will automatically move forward inserting itself into the holes. **See picture 2**

4. After the last hole insertion, **IMMEDIATELY** move document away from roller and/or stop pressing the foot pedal. Remark: if coil is over inserted or some pages are un-inserted, simply flip document over and proceed with insertion as per step 2.
5. Use crimpers to cut & crimp the excess coil. Make sure you crimp-in both ends. This procedure will prevent the document from unbinding itself. **See picture 3**



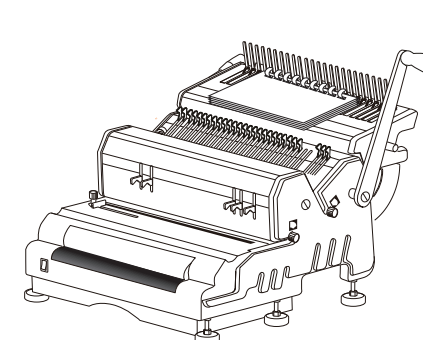
TO INSTALL COMB BINDING UNIT TO DUOMAC-ECI

1. Fasten the **Left Bracket** (marked L) to machine with screw and wrench (included). Make sure the side with **L** mark is on the top of the bracket, and facing the Right Bracket.
2. Fasten the **Right Bracket** (marked R) to machine with screw and wrench (included). Make sure the side with **R** mark is on top of the bracket, and facing the

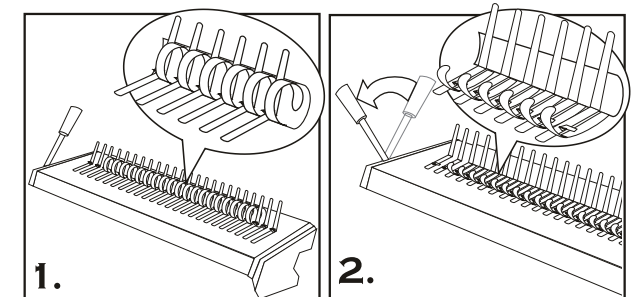


3. Place the **Comb Binding Unit** on the brackets and fasten them with screw and wrench (included). The **Comb Binding Unit** is now ready to use.

COMB BINDING



1. Place pre-selected comb behind Comb Binding Fingers. The comb opening side should be upward.
2. Slowly pull Comb Binding Handle forward to open comb until the comb binder is opened sufficiently to allow pages and covers to be inserted.



3. Neatly align the pages and covers. Holding the documents tightly with the front towards you, feed the comb through the holes.
4. When all combs are fully positioned through the holes, slowly move handle backward to close the comb. Lift out the bound documents from fingers. The comb binding is complete.

