

(11)Service **DP** only with qualified personnel.

DP is a high quality electric punching machine. With proper use, it will provide you years of trouble free services.

Warranty Policy

Your **DP** has a warranty of one year from date of purchase. In the event of a manufacturer's defect, your distributor (at option) will repair or replace it.

IMPORTANT : This warranty does not cover damages due to improper handling or miss treatment of the unit, including any extraordinary event leading to the damage of the machine, whether it is reversible or not.

If **DP** is not working properly, first follow the corrective actions recommended. If the problem persists, please contact your distributor for further advice.

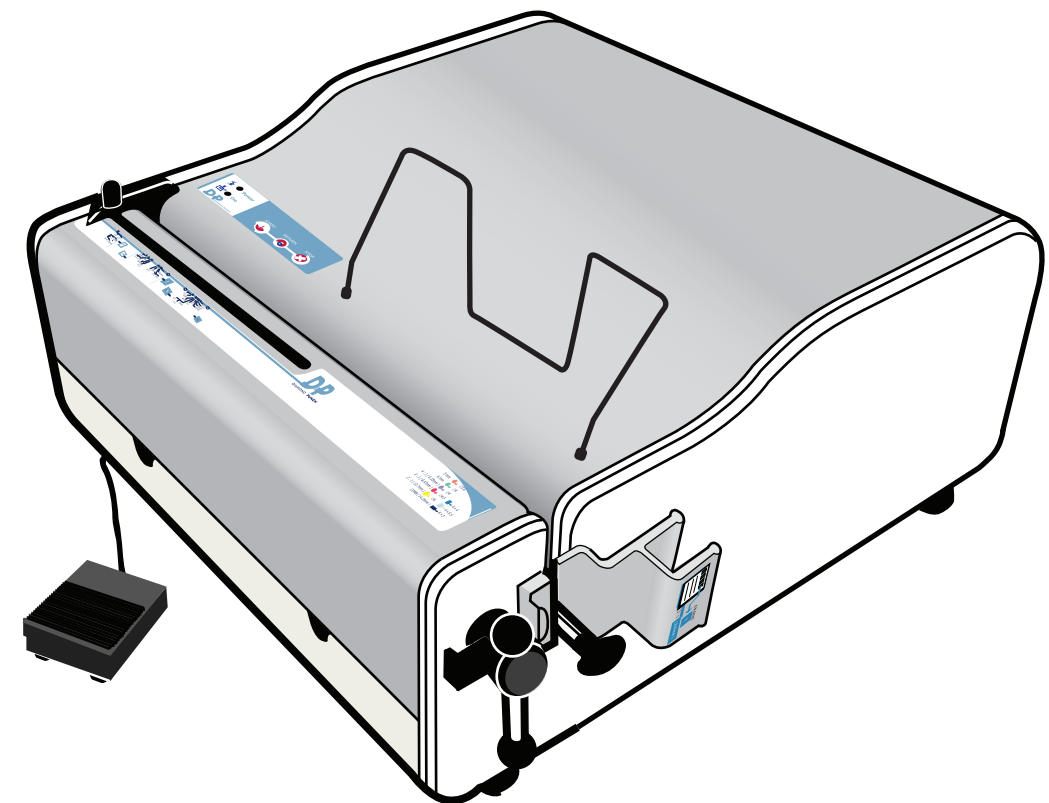
Please have **DP** 's serial number and the purchase date ready. If **DP** must be returned to your distributor, it is your responsibility to properly pack and ship it back. Any damages incurred during its transportation is not covered by our warranty policy.



Operation Manual

Congratulations on the purchase of your new **DP**, a professional heavy duty electric punching machine designed for copy centers or offices that need various punching pattern.

- * Maximum punching capacity of 35 sheets of 80 gsm paper.
- * Maximum punching width of 14" (356 mm).
- * Open ended design.
- * Quick die change over.
- * Disengageable punching blades.



(1) Features	3
(2) Safety	4
(3) Set-up	4
(4) Electric Power Supply	4
(5) Installation of Punching Die	5
5.1 Adjustment of Depth Margin	5
5.2 Removal of Die	6
5.3 Disengaging punching blades	7
5.4 Maintenance of Die	8
(6) Adjustment of Side Margin	8
(7) Punching of Paper	9
(8) Removal of Paper Chad	10
(9) Paper Jam	10
9.1 Electrical Reverse Function	11
9.2 Mechanical Reverse Device	11
(10) Warranty Policy	12

(9.2) Mechanical Reverse Device

Always turn off power before removal of die.

If the machine is jammed too hard, electrical reverse function will not work. Take out the driver provided as accessory. Turn off the power before proceeding the mechanical reverse action.

Step 1 :

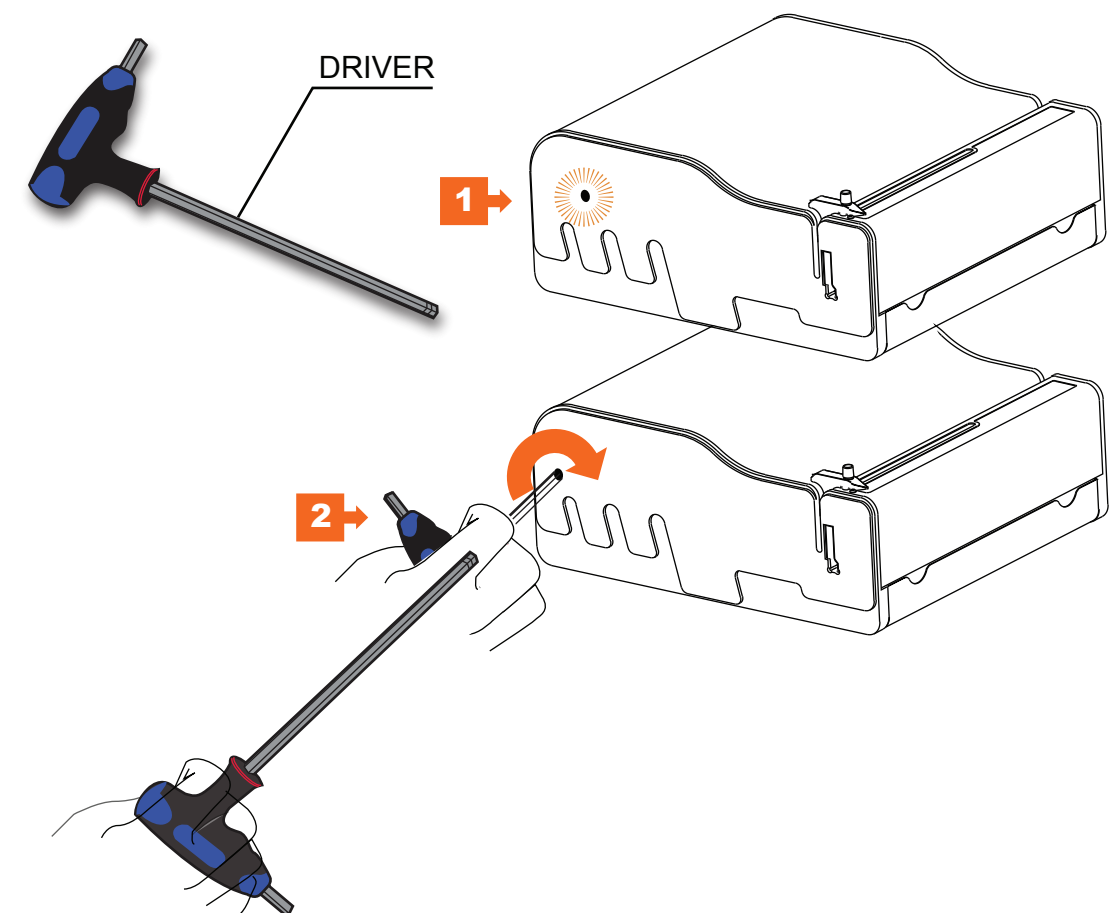
Plug the driver into the hole (1) on the left panel.

Step 2 :

Push in firmly and then turn the driver anti-clockwise (2)

Step 3 :

Turn the driver until the blades retrieve to home position. Take out the drive and then remove the jammed paper. Turn on DP and energize the punching action a few times.

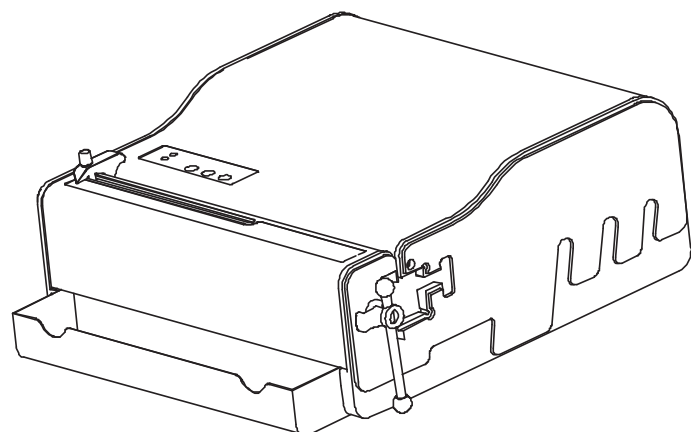


(8) Removal of Paper Chad

Excessive paper chad, if upto the punching throat may damage the die or the machine.

Step 1 :

Pull out the paper chad tray to empty the waste.



(9) Paper Jam

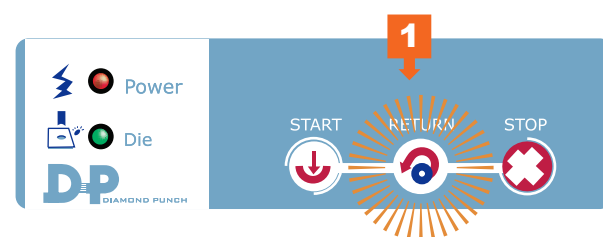
(9.1) Electrical Reverse Function

DP is equipped with advanced and reliable PCB to protect the motor.

- * If the motor gets too hot, the automatic overheat cutout electric supply to the motor.
- * If the punching cycle is too long (~ 3 sec), electric supply to the motor will be cutoff.
- * Too high a current will cause breaker to break, reset as necessary, if symptom persists , consult distributor.
- * There is a slow rated fuse in the PCB to provide a final protection of the circuit. If burnt, the power supply to **DP** will be totally cutoff. Consult distributor.

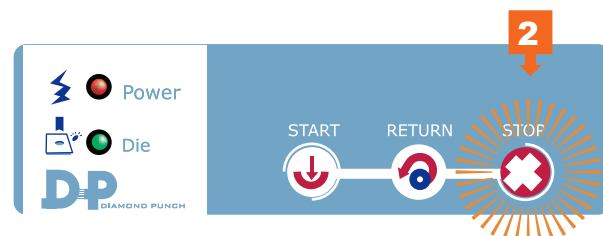
Step 1 :

Jog "RETURN" (1) to reverse motor to home position.

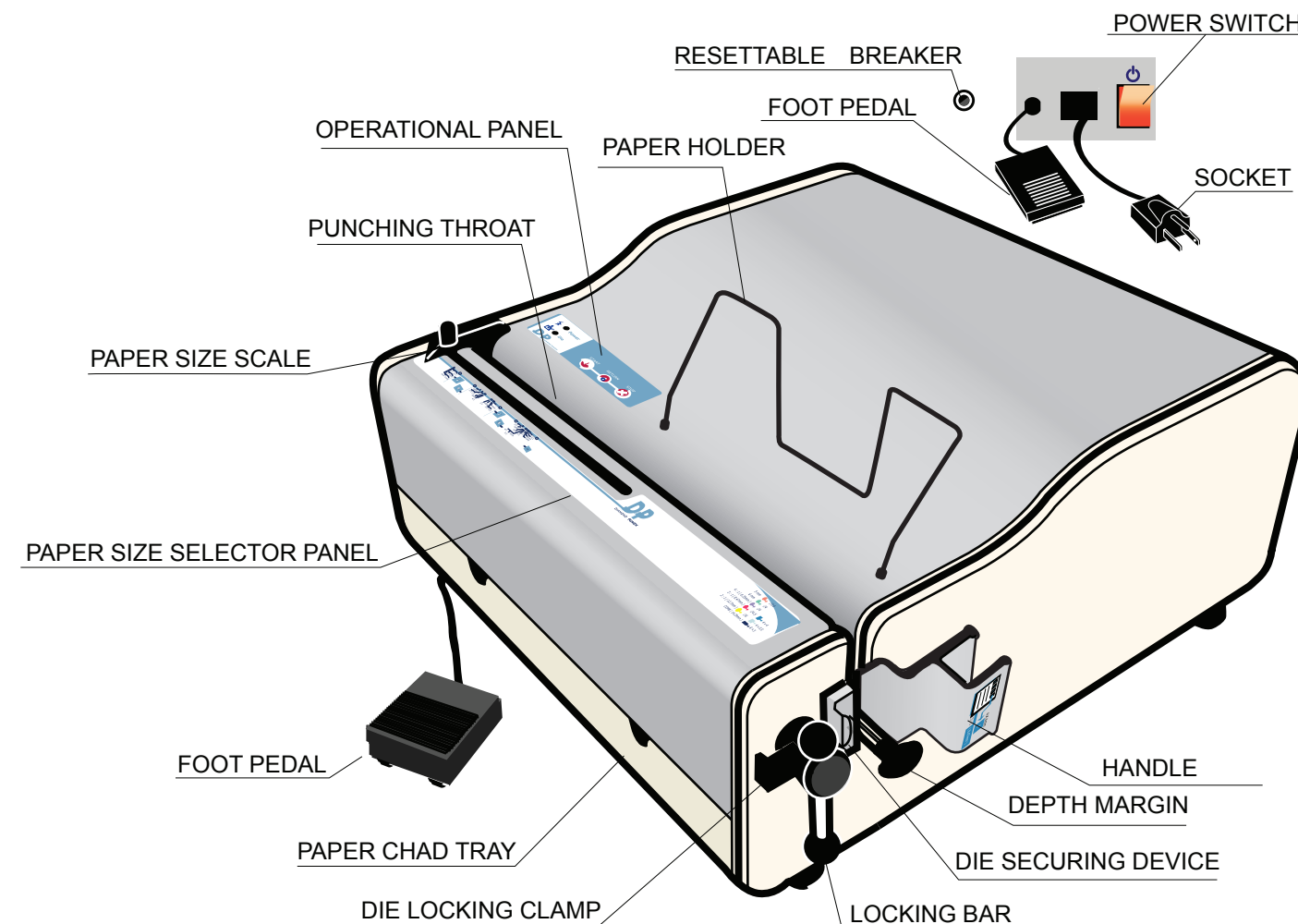


Step 2 :

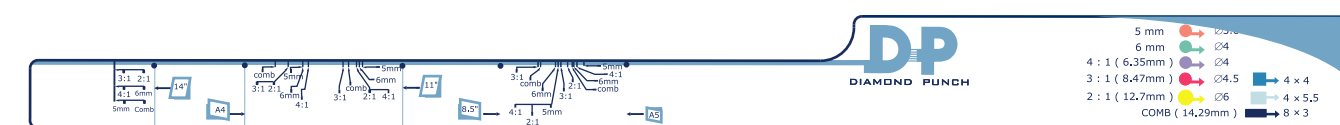
If abnormal motion is being observed, press "STOP" (2) to cease motor movement. Take action as deemed necessary.



(1) FEATURES



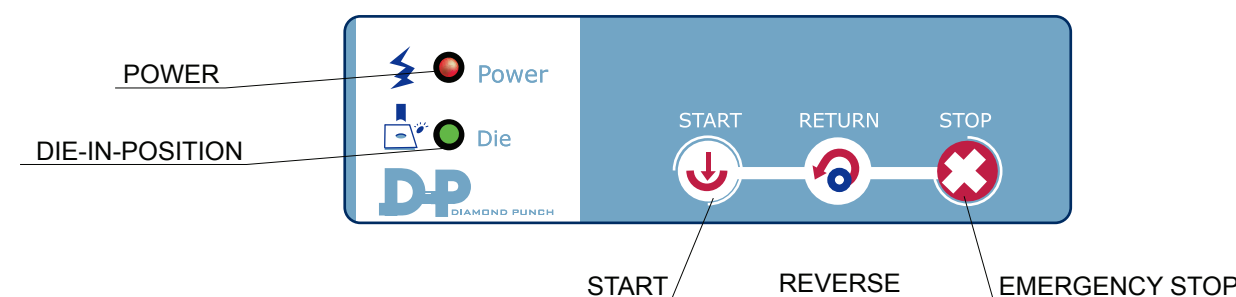
* PAPER SIZE SELECTOR PANEL



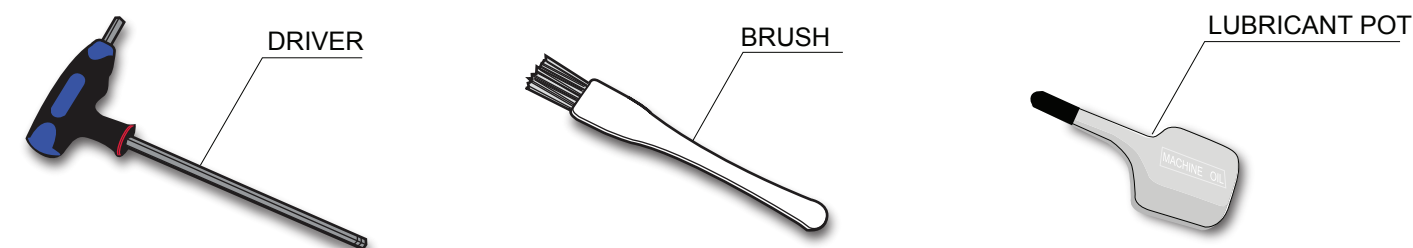
PAPER SIZE SELECTOR

DIE IDENTIFICATION

* OPERATIONAL PAEL



* ACCESSORINES



(2) Safety

We strongly recommend that you take a few minutes to go through the manual before setting **DP** into service.

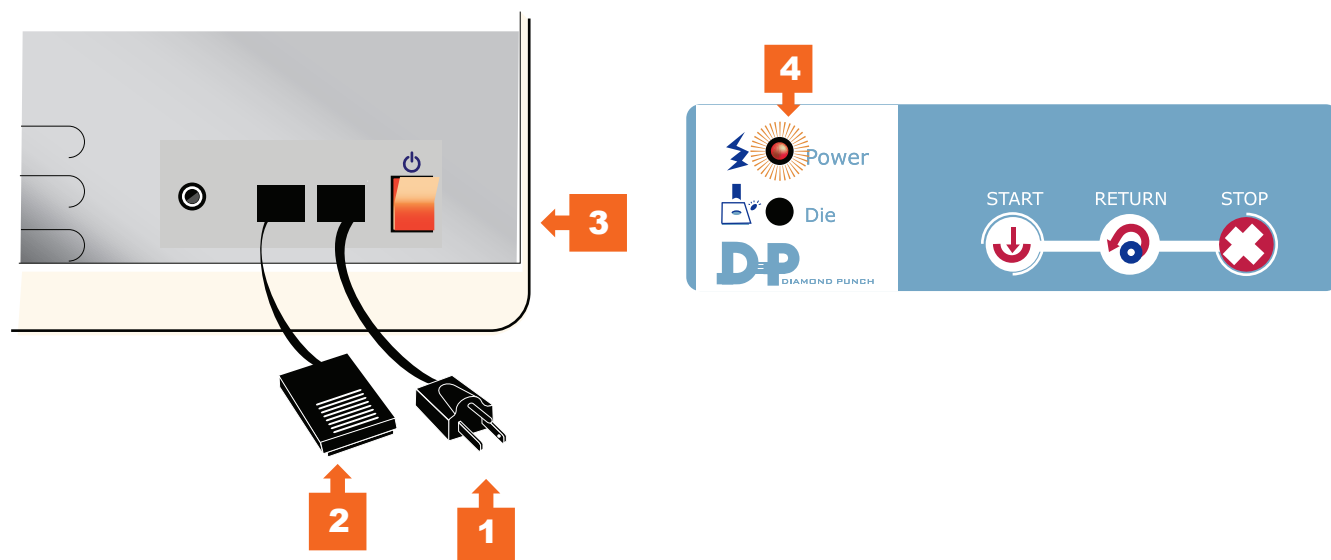
- * Check the nameplate voltage is in correspondence with local electric power supply.
- * Never operate **DP** in close vicinity to water or condensate.
- * Plug into wall socket with 10 Amp (230V/50HZ) Supply (15 Amp for 115V/60HZ).
- * If motor is jammed or malfunctioning, consult distributor.
- * Never fix **DP** by hand without switching off the unit and unplug the cord.
- * Turn off **DP** before change over the die or doing maintenance.

(3) Set-up

- * Do not plug in power cord during setting **DP** into service.
- * Place **DP** on top of a sturdy working table by two or more persons as **DP** weighs over 50 kg.
- * Level **DP** with adjustable legs.

(4) Electric Power Supply

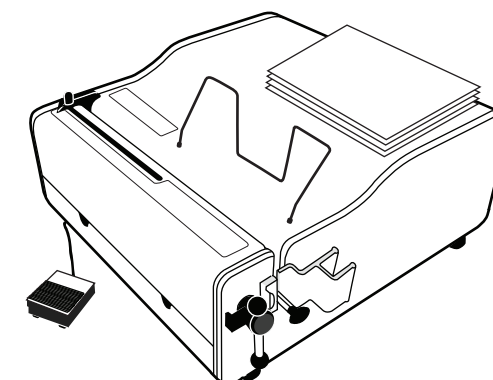
- * Do not use **DP** with damaged power cord.
- * Plug the cord (1) into socket of **DP** and then into the wall socket.
- * Place foot pedal (2) at the front.
- * Turn on the red rocker switch (3), the red light (4) on the operational panel is alight.



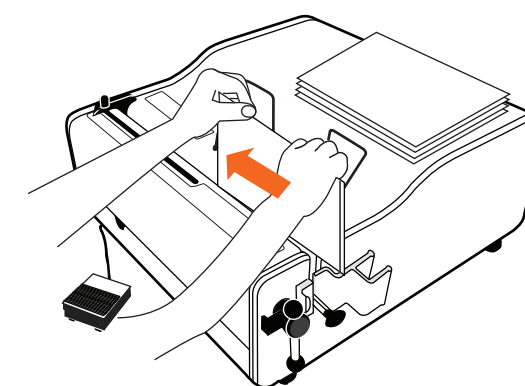
(7) Paper Punching

DP is rated at punching 35 sheets of 80 gsm paper. Punching too many plastic sheets or very hard boards may damage the die or the machine.

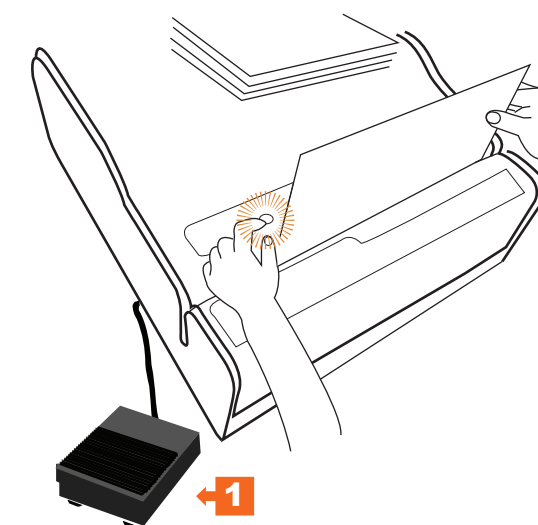
Step 1 :
Place the paper stack where picking up is convenient.



Step 2 :
Sliding layers of paper from the right or place it vertically into the punching throat.



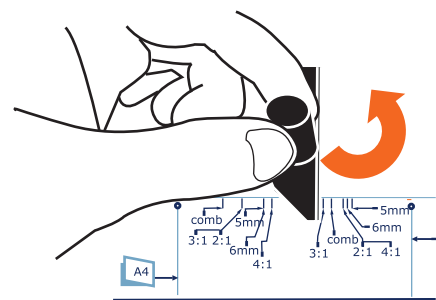
Step 3 :
Align it at the side margin control.



Step 4 :
Punch can be performed by pushing "START" (2) on operational panel or press foot pedal (1).

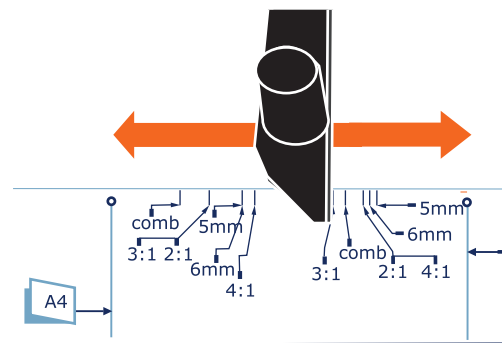


(6) Adjustment of side margin



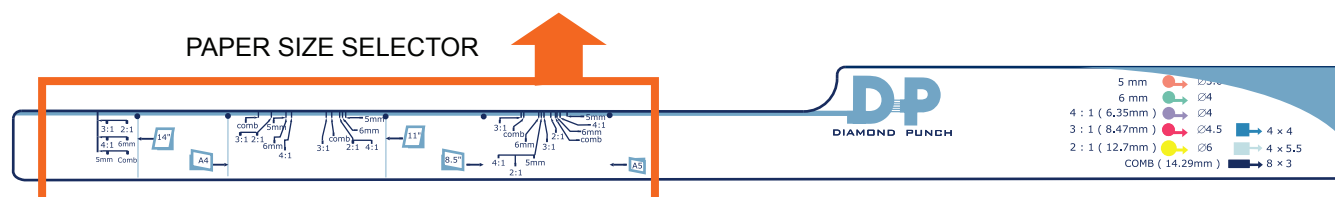
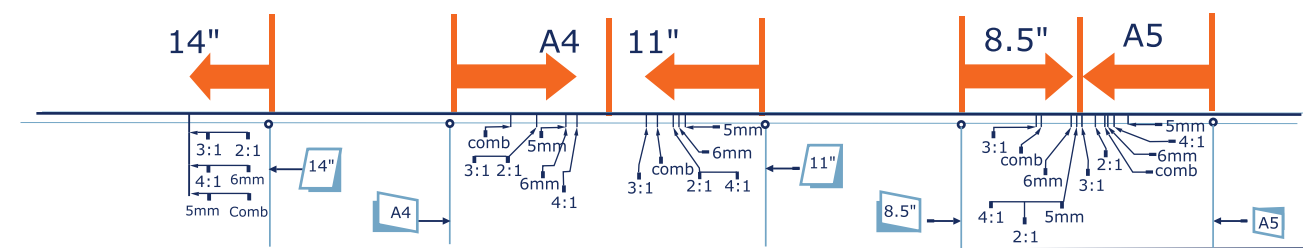
Step 1 :
Loose the side margin control by turning the nut anti-clockwise

Over-loosening may result in parts falling out.



Step 2 :
Look for the right position on the side margin scale.

Step 3 :
Tightening the side margin control by turning the nut clockwise

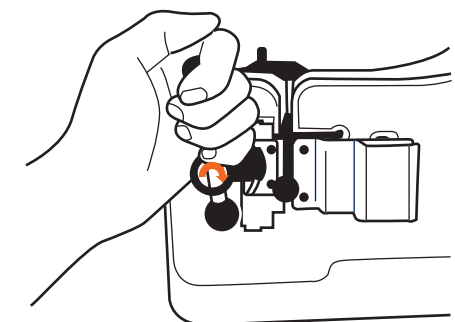
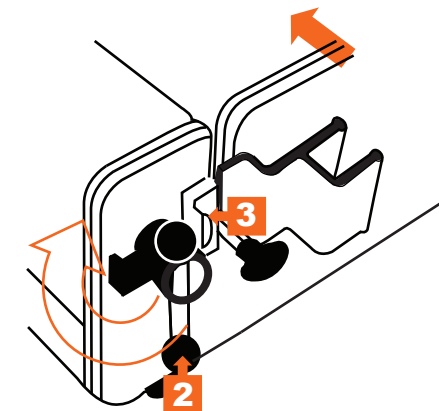
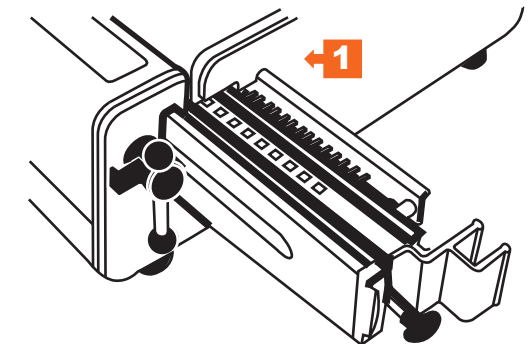


(5) Installation of Punching Die

Always turn off power before installation of die

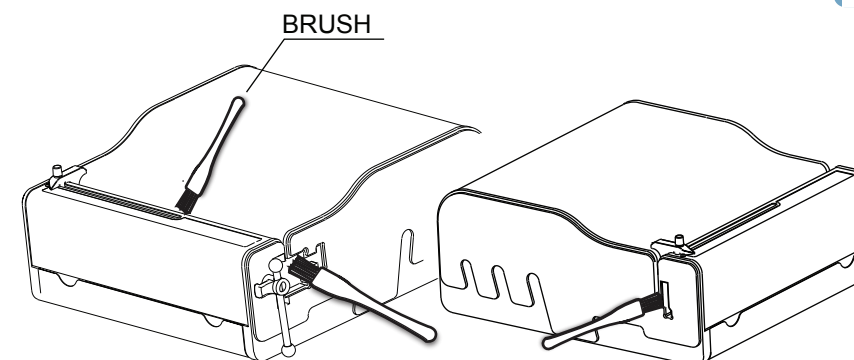
Step 1 :
Push the die from the right, make sure that it fits into the guide grooves as shown (1). Push all the way until the die is completely in its place.

The locking bar must be in unlocked mode.



Step 2 :
Turn the locking bar clockwise until the die is firmly secured.

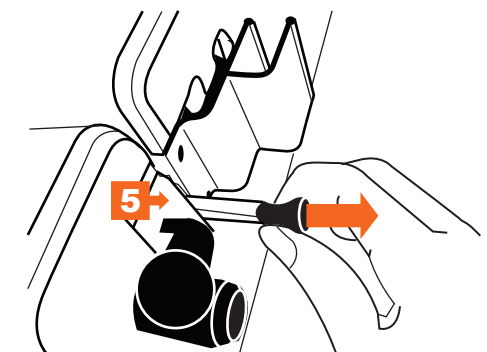
Step 3
Switch on the electric power supply. The green light (4) indicating "Die In Position" is alight.



If the die can not be pushed in completely, brush away paper chad in the guide grooves .

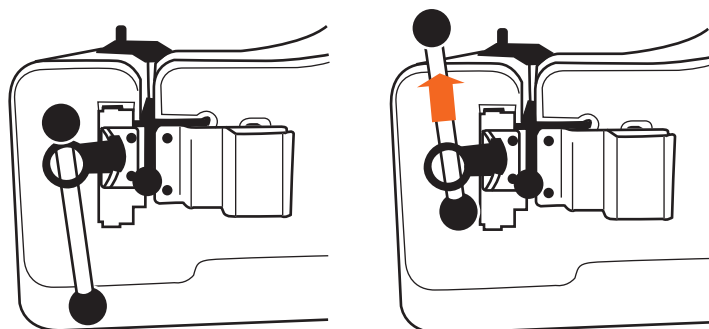
(5.1) Adjustment of Depth Margin

The square bar (5) is used to adjust the depth margin intermittently at 2 mm, 3 mm, 4 mm and 5 mm. Pushing all the way to left will result in 2 mm margin, Pulling out to the right will increase the margin.

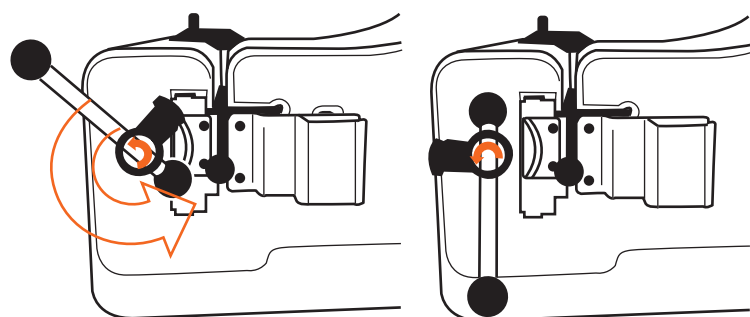


(5.2) Removal of die

Always turn off power before removal of die.



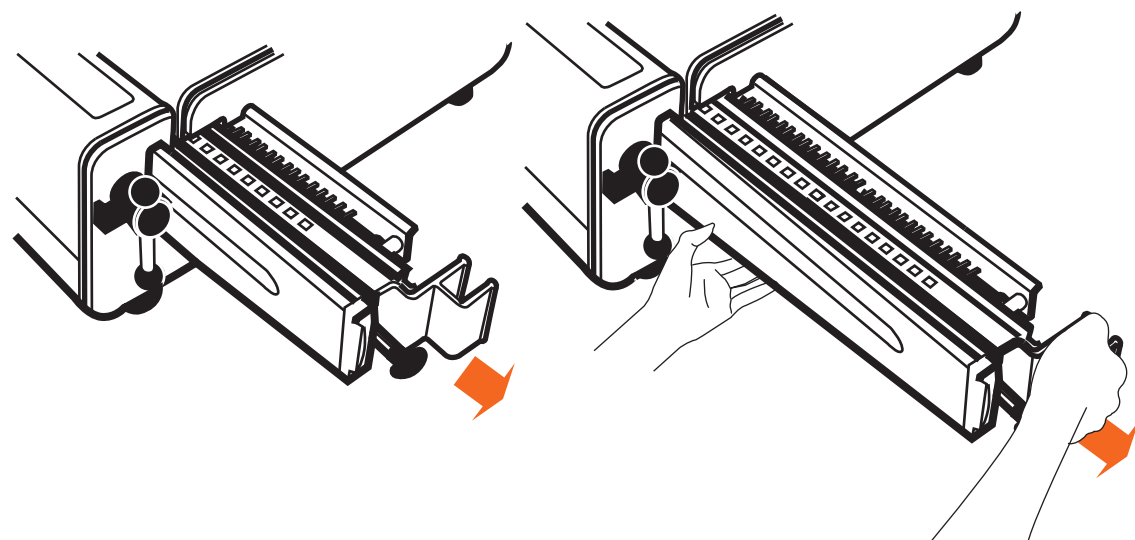
Step 1 :
Position the locking bar up as shown.



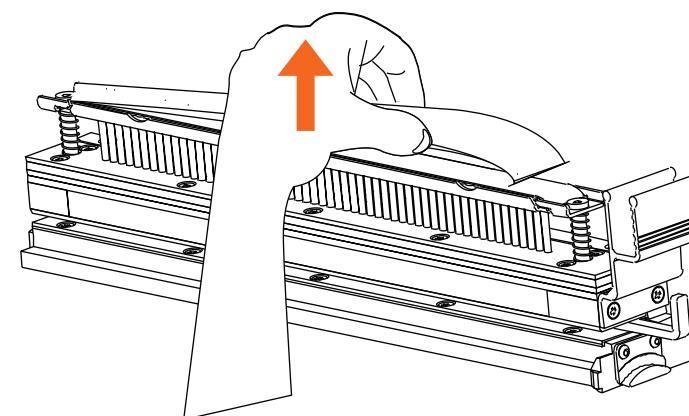
Step 2 :
Turn the locking bar anti-clockwise
slowly to unlock the die locking clamp.

Make sure that the locking bar does
not hit the square bar for depth margin
adjustment.

Step 3 : When the die is out by 1/3, handle the die with both hands to avoid damaging.

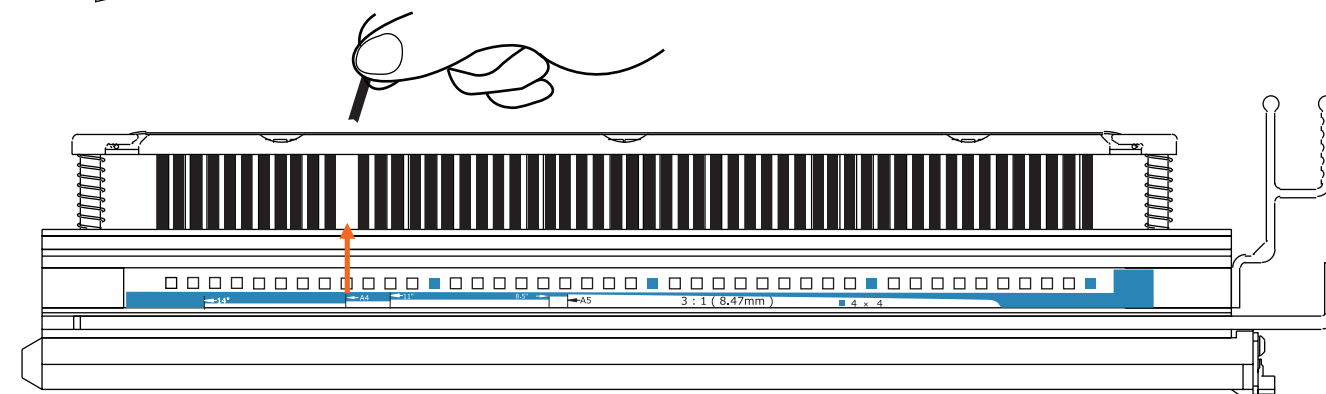


(5.3) Disengaging punching blades

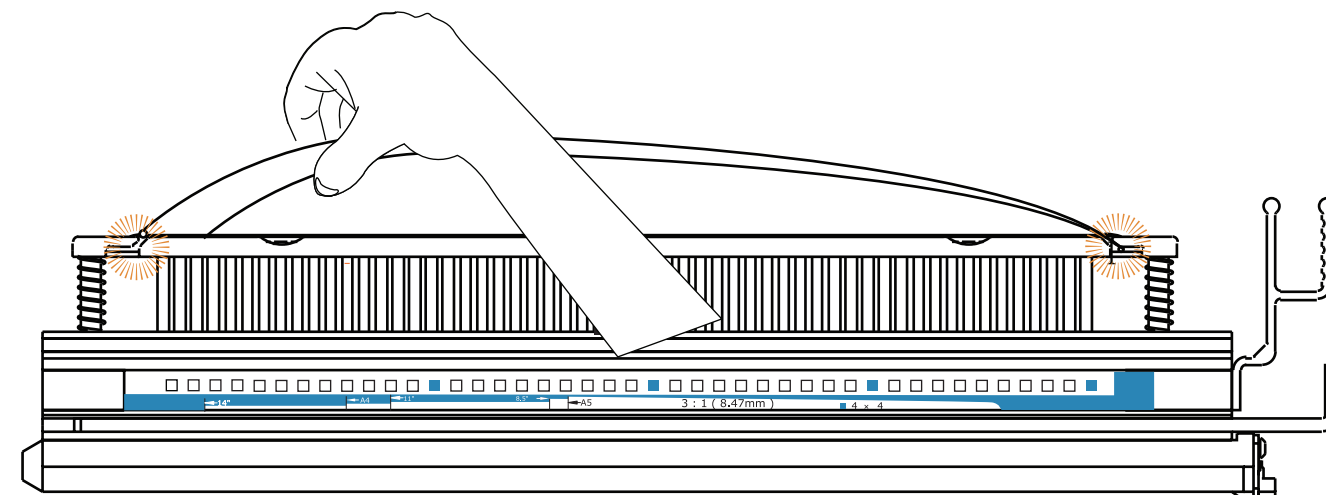


Step 1 :
Pull the blade retaining cover upward in order
to remove it.

Step 2 :
Remove the punching blade vertically.

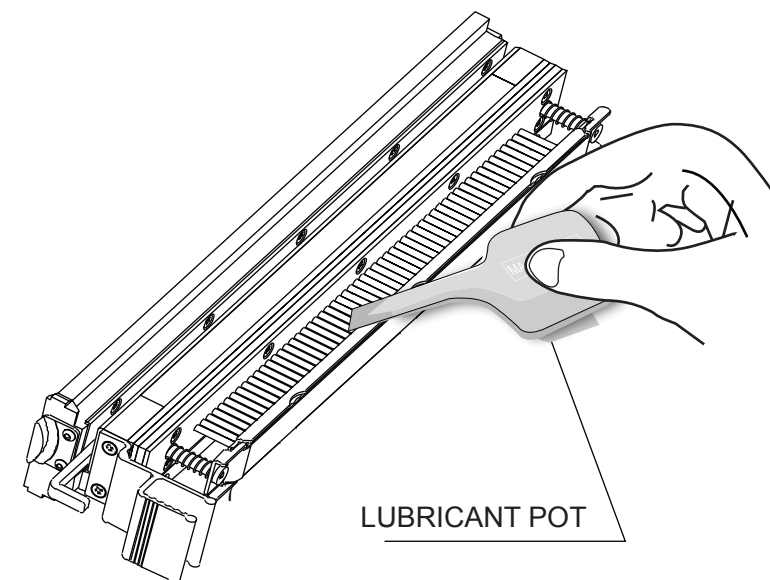


Step 3 :
Bend the blade retaining cove slightly in order to put it back.



(5.4) Maintenance of Die

Remove the die from the machine before
proceeding maintenance. Spread anti-rust
lubricant onto the blades.
Remove excessive
lubricant by punching waste paper.



LUBRICANT POT